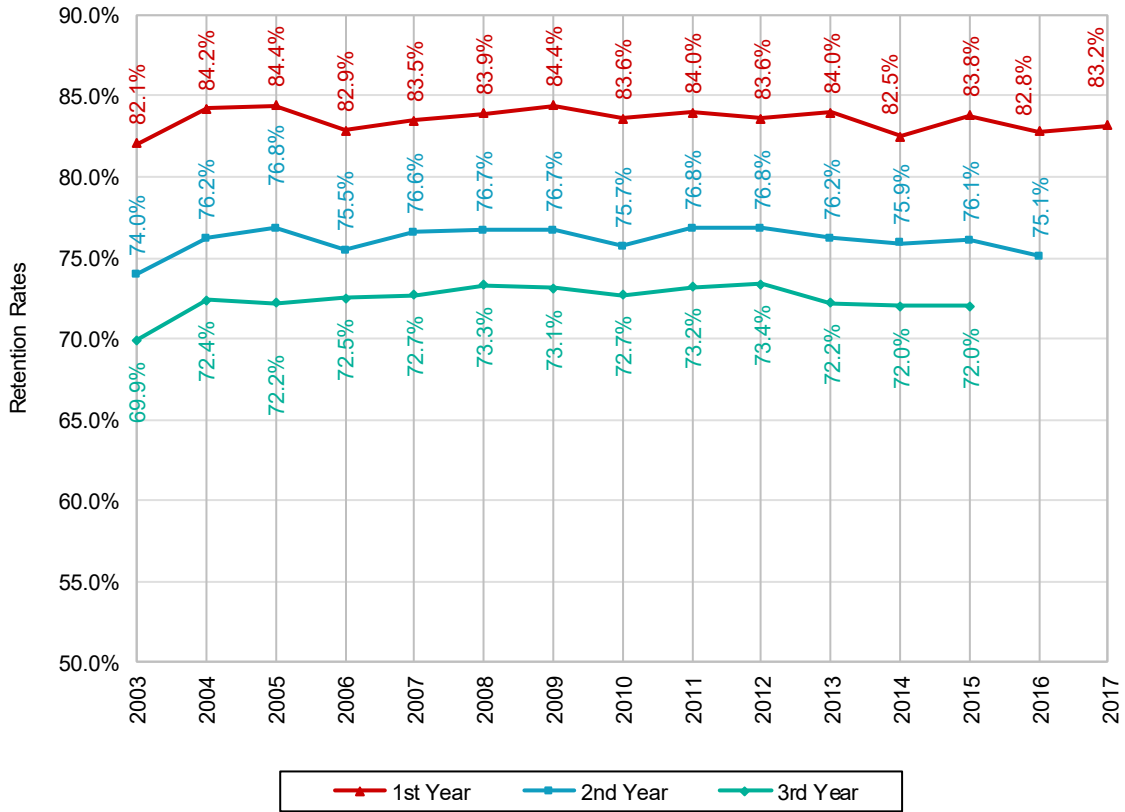




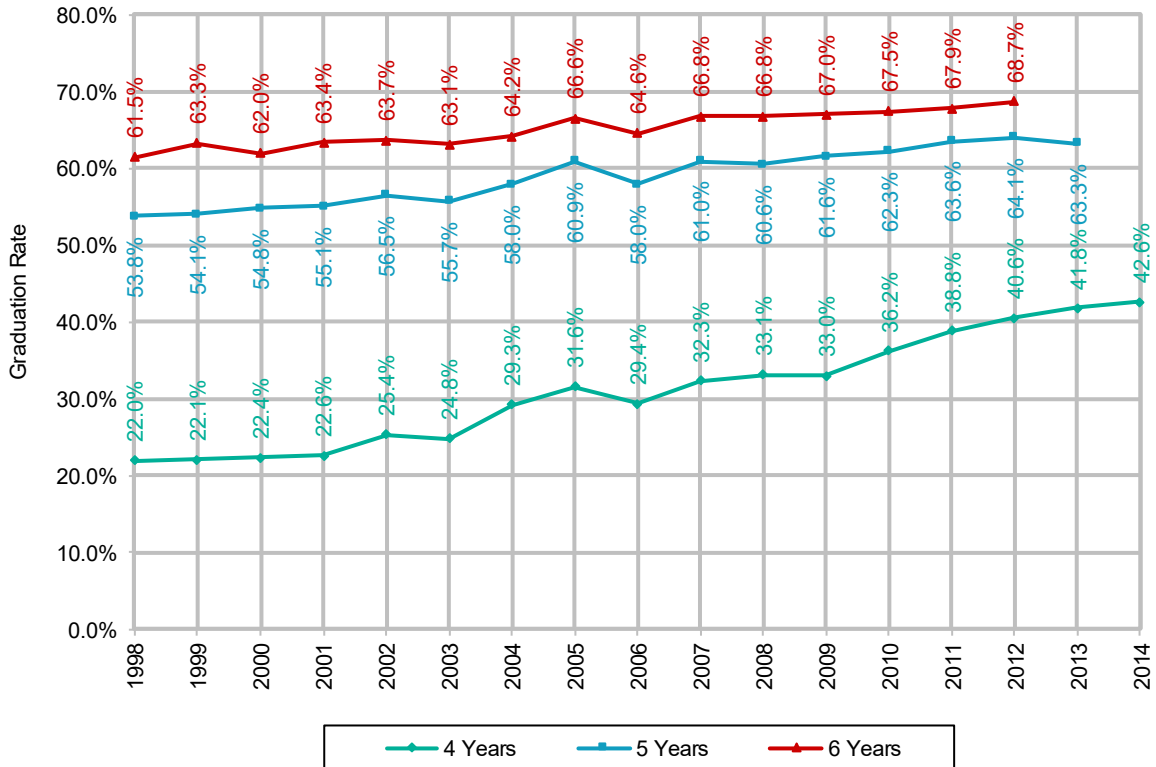
Student Retention Rates
Retention Tracking of First-Time, Full-Time, Freshmen
15 Year Trend



Student Retention Rates			
Entering Year	1st Year	2nd Year	3rd Year
2003	82.1%	74.0%	69.9%
2004	84.2%	76.2%	72.4%
2005	84.4%	76.8%	72.2%
2006	82.9%	75.5%	72.5%
2007	83.5%	76.6%	72.7%
2008	83.9%	76.7%	73.3%
2009	84.4%	76.7%	73.1%
2010	83.6%	75.7%	72.7%
2011	84.0%	76.8%	73.2%
2012	83.6%	76.8%	73.4%
2013	84.0%	76.2%	72.2%
2014	82.5%	75.9%	72.0%
2015	83.8%	76.1%	72.0%
2016	82.8%	75.1%	
2017	83.2%		



Student Graduation Rates
Graduation of First-Time, Full-Time, Freshmen
15 Year Trend



Student Graduation Rates			
Entering Year	4 Years	5 Years	6 Years
1998	22.0%	53.8%	61.5%
1999	22.1%	54.1%	63.3%
2000	22.4%	54.8%	62.0%
2001	22.6%	55.1%	63.4%
2002	25.4%	56.5%	63.7%
2003	24.8%	55.7%	63.1%
2004	29.3%	58.0%	64.2%
2005	31.6%	60.9%	66.6%
2006	29.4%	58.0%	64.6%
2007	32.3%	61.0%	66.8%
2008	33.1%	60.6%	66.8%
2009	33.0%	61.6%	67.0%
2010	36.2%	62.3%	67.5%
2011	38.8%	63.6%	67.9%
2012	40.6%	64.1%	68.7%
2013	41.8%	63.3%	
2014	42.6%		



**Student Six-Year Graduation Rates by Gender, Ethnicity, Residency and
Need-Based Financial Aid**
Graduation of First-Time, Full-Time, Freshmen

Notes:

The following six-year graduation rates are for the **Fall 2012 first-time, full-time**, freshmen class. The 2012 freshmen class had **3,918** first-time, full-time, students. For comparison, the overall six-year graduation rate for the 2012 freshmen class was **68.7%**.

Gender		
Gender	Students	Grad Rate
Male	2,063	65.4%
Female	1,855	72.5%

Ethnicity		
Ethnicity	Students	Grad Rate
American Indian / Alaska Native	10	40.0%
Asian	91	65.9%
Black, Non-Hispanic	98	39.8%
Hispanic	191	55.5%
Non-Resident Alien*	114	70.2%
Pacific Islander	6	66.7%
Two or More	129	58.1%
Unknown	110	63.6%
White, Non-Hispanic	3,169	71.2%

*Also referenced as "International Students" in next table

International Students*		
	Students	Grad Rate
International Students*	114	70.2%

*Also referenced as "Non-Resident Alien" in preceding "Ethnicity" table

Residency		
Gender	Students	Grad Rate
Resident	3,086	69.4%
Non-Resident	832	66.3%

Need-Based Financial Aid		
Type	Students	Grad Rate
Recipients of a Federal Pell Grant	911	58.8%
Recipients of a subsidized Stafford Loan who did not receive a Pell Grant	732	62.4%
Did not receive either a Pell Grant or a subsidized Stafford Loan	2,275	74.7%