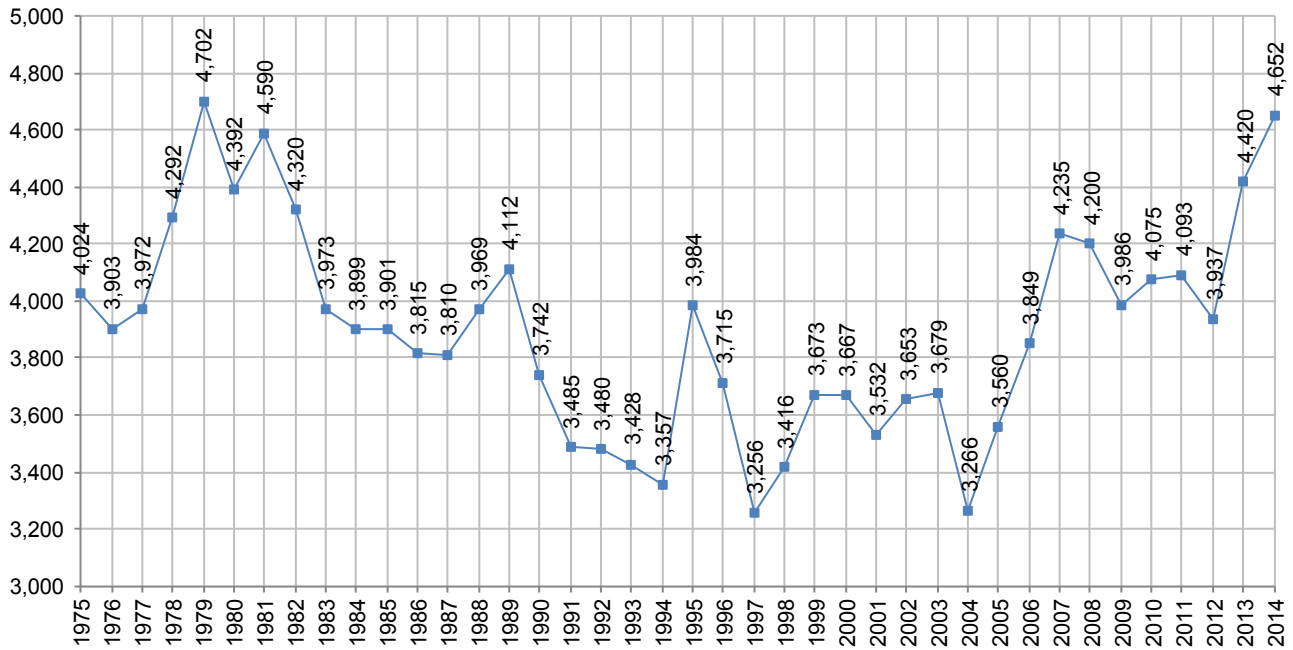




History of First-Time Freshmen (Full- and Part-Time) Fall Semesters, 1975 - 2014



History of First-Time Freshmen (Full- and Part-Time)							
Year	Full-Time	Part-Time	Total	Year	Full-Time	Part-Time	Total
1975	3,883	141	4,024	1995	3,900	84	3,984
1976	3,798	105	3,903	1996	3,631	84	3,715
1977	3,844	128	3,972	1997	3,200	56	3,256
1978	4,070	222	4,292	1998	3,357	59	3,416
1979	4,441	261	4,702	1999	3,599	74	3,673
1980	4,222	170	4,392	2000	3,605	62	3,667
1981	4,314	276	4,590	2001	3,482	50	3,532
1982	4,114	206	4,320	2002	3,617	36	3,653
1983	3,801	172	3,973	2003	3,641	38	3,679
1984	3,703	196	3,899	2004	3,238	28	3,266
1985	3,730	171	3,901	2005	3,538	22	3,560
1986	3,665	150	3,815	2006	3,831	18	3,849
1987	3,661	149	3,810	2007	4,215	20	4,235
1988	3,816	153	3,969	2008	4,166	34	4,200
1989	3,950	162	4,112	2009	3,965	21	3,986
1990	3,651	91	3,742	2010	4,039	36	4,075
1991	3,392	93	3,485	2011	4,056	37	4,093
1992	3,398	82	3,480	2012	3,918	19	3,937
1993	3,329	99	3,428	2013	4,396	24	4,420
1994	3,267	90	3,357	2014	4,628	24	4,652