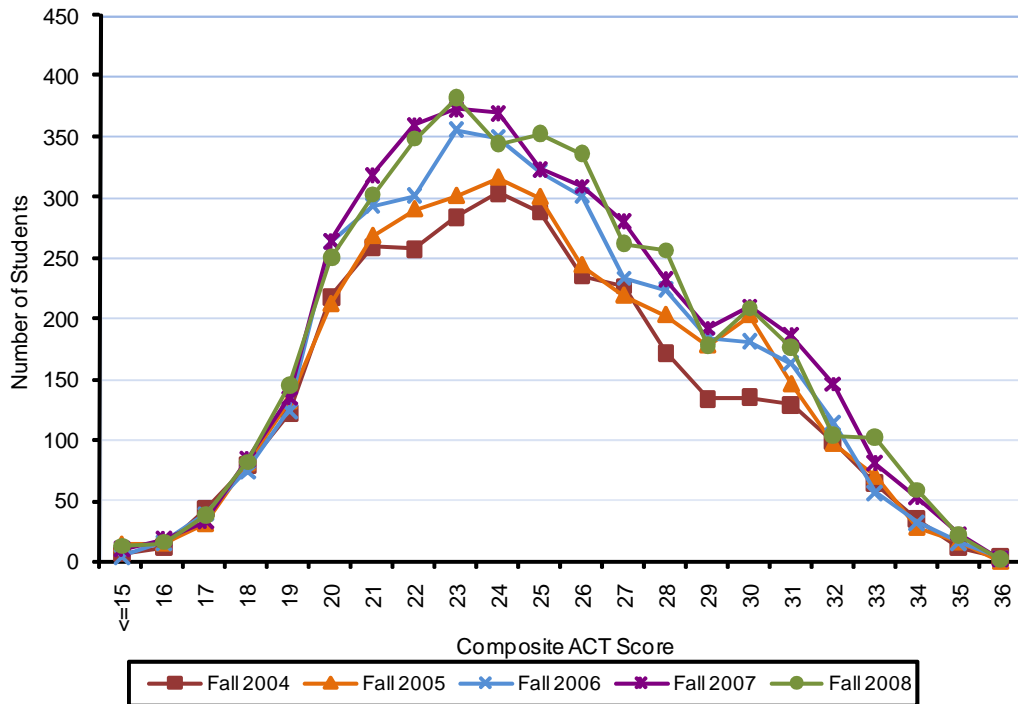




First Time Freshmen ACT Scores - 5 Year Trend



Composite Score	Fall 2004	Fall 2005	Fall 2006	Fall 2007	Fall 2008
15 & below	6	14	4	9	12
16	11	15	15	18	15
17	43	31	39	33	37
18	79	81	74	84	81
19	122	132	124	134	145
20	218	212	264	264	250
21	259	268	293	318	302
22	258	290	301	360	348
23	284	301	356	373	382
24	304	316	350	369	344
25	288	300	322	323	352
26	235	244	301	309	336
27	227	219	233	280	262
28	172	203	224	232	256
29	134	178	184	192	178
30	135	203	181	210	208
31	129	146	163	186	176
32	98	97	114	146	103
33	64	70	57	80	102
34	35	28	32	52	58
35	11	16	15	22	21
36	3	0	2	1	1

NOTE: Freshmen are required to submit either ACT or SAT test scores. The majority submit ACT.

Last updated: September 15, 2008