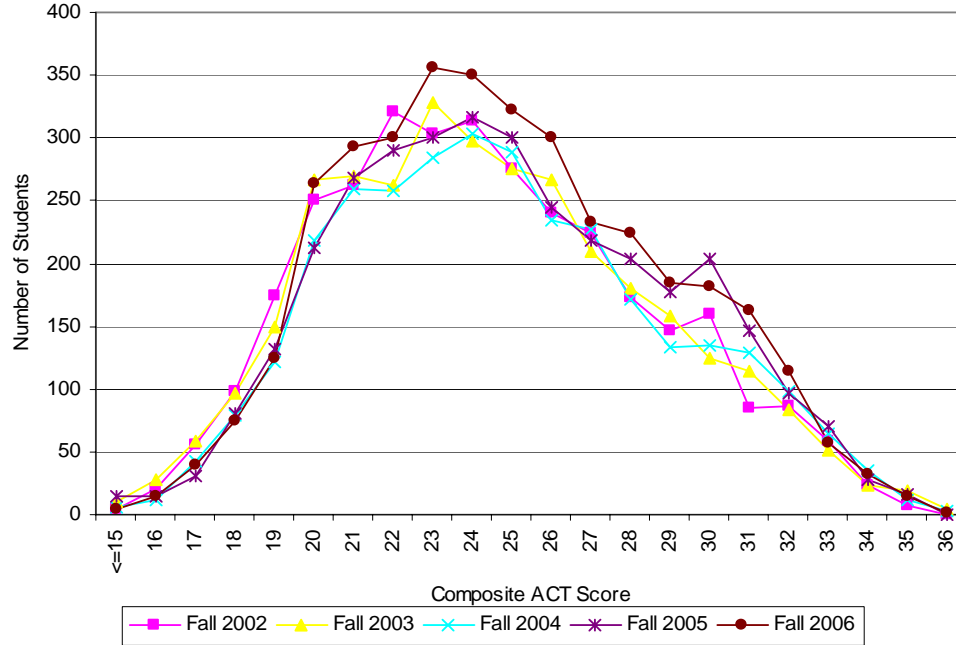




### First Time Freshmen ACT Scores - 5 Year Trend



Composite Score	Fall 2002	Fall 2003	Fall 2004	Fall 2005	Fall 2006
15 & below	5	10	6	14	4
16	21	28	11	15	15
17	56	59	43	31	39
18	98	97	79	81	74
19	175	150	122	132	124
20	250	266	218	212	264
21	263	270	259	268	293
22	321	262	258	290	301
23	304	328	284	301	356
24	314	297	304	316	350
25	276	276	288	300	322
26	241	267	235	244	301
27	224	210	227	219	233
28	173	180	172	203	224
29	147	158	134	178	184
30	159	125	135	203	181
31	85	114	129	146	163
32	86	83	98	97	114
33	58	52	64	70	57
34	24	24	35	28	32
35	7	19	11	16	15
36	0	4	3	0	2

NOTE: Freshmen are required to submit either ACT or SAT test scores. The majority submit ACT.

Last updated: May 21, 2007