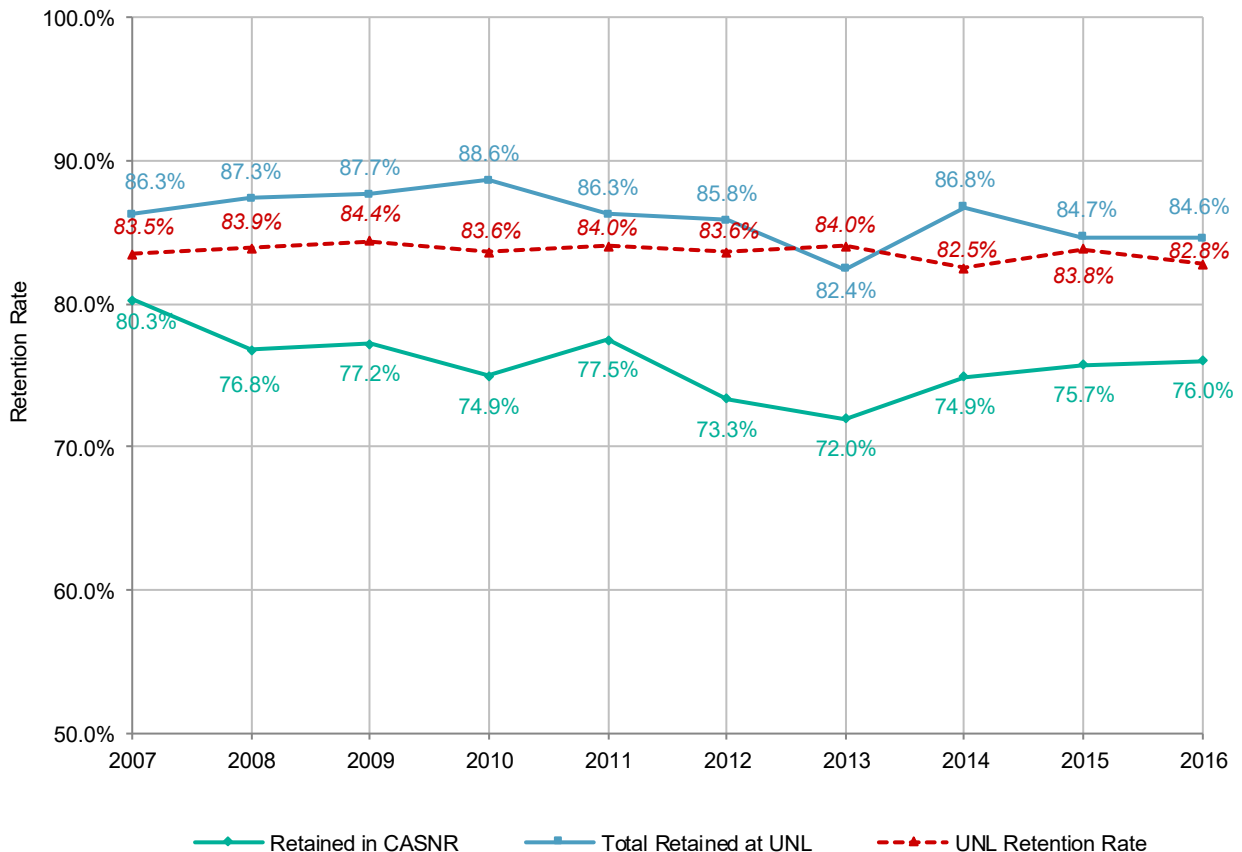




College of Agricultural Sciences and Natural Resources (CASNR)										
One-Year Retention Rates by College, 10 Year Trend (2007-2016)										
First-Time, Full-Time, Freshmen										
Retained to Second Year										
Students										
	2007	2008	2009	2010	2011	2012	2013	2014	2015	2016
Total in CASNR	299	332	316	343	342	360	432	446	457	479
Retained in CASNR	240	255	244	257	265	264	311	334	346	364
Retained in Different College	18	35	33	47	30	45	45	53	41	41
Total Retained at UNL	258	290	277	304	295	309	356	387	387	405
Not Retained at UNL	41	42	39	39	47	51	76	59	70	74
Percentages										
	2007	2008	2009	2010	2011	2012	2013	2014	2015	2016
Retained in CASNR	80.3%	76.8%	77.2%	74.9%	77.5%	73.3%	72.0%	74.9%	75.7%	76.0%
Retained in Different College	6.0%	10.5%	10.4%	13.7%	8.8%	12.5%	10.4%	11.9%	9.0%	8.6%
Total Retained at UNL	86.3%	87.3%	87.7%	88.6%	86.3%	85.8%	82.4%	86.8%	84.7%	84.6%
Not Retained at UNL	13.7%	12.7%	12.3%	11.4%	13.7%	14.2%	17.6%	13.2%	15.3%	15.4%
UNL Retention Rate	83.5%	83.9%	84.4%	83.6%	84.0%	83.6%	84.0%	82.5%	83.8%	82.8%

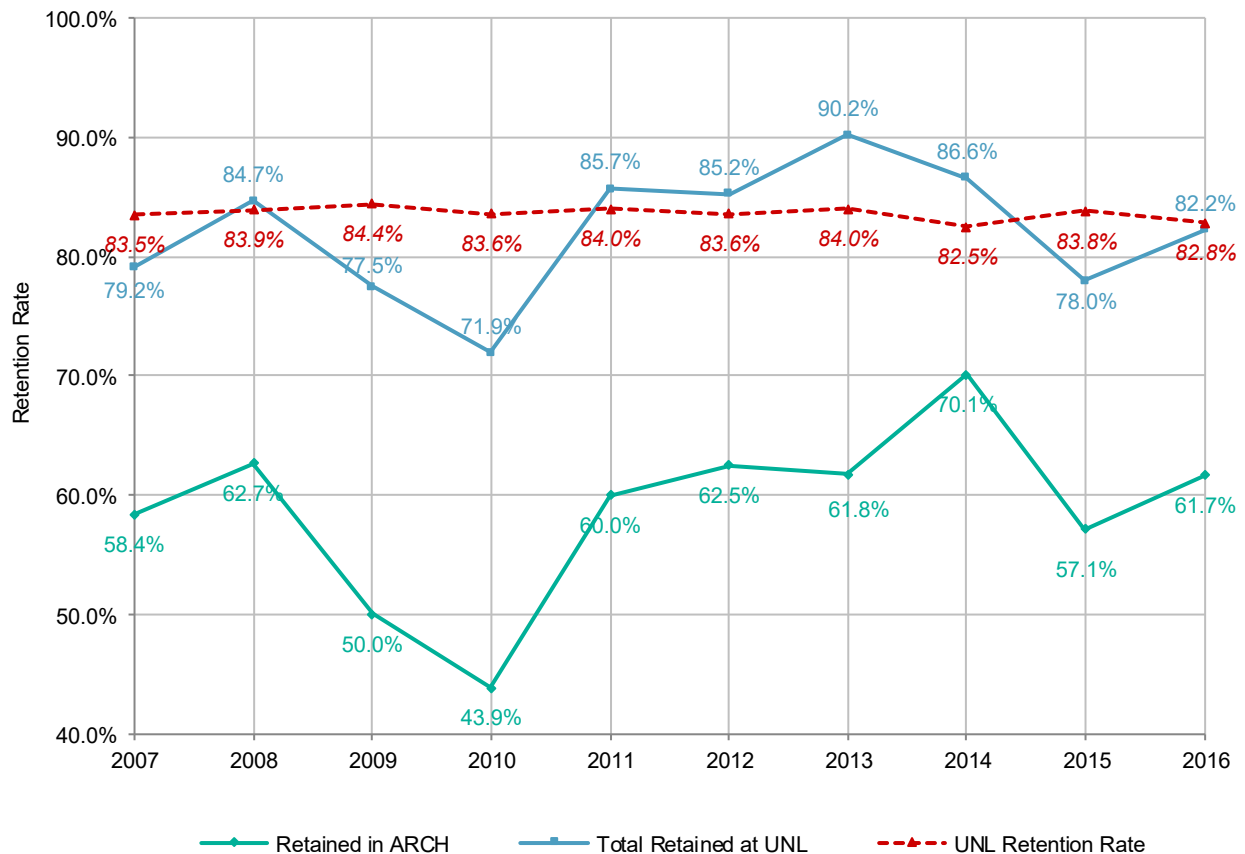
College of Agricultural Sciences and Natural Resources





College of Architecture (ARCH)										
One-Year Retention Rates by College, 10 Year Trend (2007-2016)										
First-Time, Full-Time, Freshmen										
Retained to Second Year										
Students										
	2007	2008	2009	2010	2011	2012	2013	2014	2015	2016
Total in ARCH	149	150	102	114	105	88	102	97	91	107
Retained in ARCH	87	94	51	50	63	55	63	68	52	66
Retained in Different College	31	33	28	32	27	20	29	16	19	22
Total Retained at UNL	118	127	79	82	90	75	92	84	71	88
Not Retained at UNL	31	23	23	32	15	13	10	13	20	19
Percentages										
	2007	2008	2009	2010	2011	2012	2013	2014	2015	2016
Retained in ARCH	58.4%	62.7%	50.0%	43.9%	60.0%	62.5%	61.8%	70.1%	57.1%	61.7%
Retained in Different College	20.8%	22.0%	27.5%	28.1%	25.7%	22.7%	28.4%	16.5%	20.9%	20.6%
Total Retained at UNL	79.2%	84.7%	77.5%	71.9%	85.7%	85.2%	90.2%	86.6%	78.0%	82.2%
Not Retained at UNL	20.8%	15.3%	22.5%	28.1%	14.3%	14.8%	9.8%	13.4%	22.0%	17.8%
<i>UNL Retention Rate</i>	83.5%	83.9%	84.4%	83.6%	84.0%	83.6%	84.0%	82.5%	83.8%	82.8%

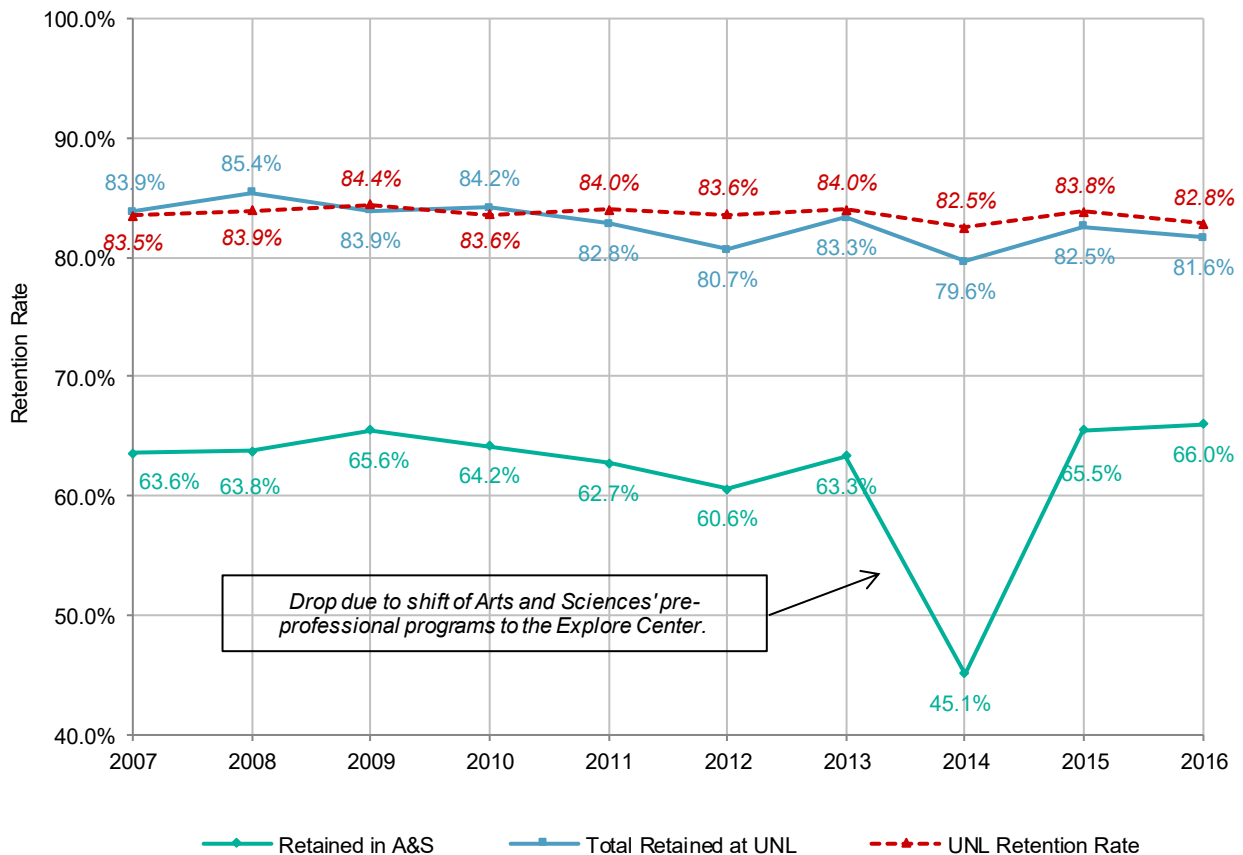
College of Architecture





College of Arts and Sciences (A&S)										
One-Year Retention Rates by College, 10 Year Trend (2007-2016)										
First-Time, Full-Time, Freshmen										
Retained to Second Year										
Students										
	2007	2008	2009	2010	2011	2012	2013	2014	2015	2016
Total in A&S	929	878	993	1,092	985	1,030	1,055	1,223	722	768
Retained in A&S	591	560	651	701	618	624	668	552	473	507
Retained in Different College	188	190	182	218	198	207	211	422	123	120
Total Retained at UNL	779	750	833	919	816	831	879	974	596	627
Not Retained at UNL	150	128	160	173	169	199	176	249	126	141
Percentages										
	2007	2008	2009	2010	2011	2012	2013	2014	2015	2016
Retained in A&S	63.6%	63.8%	65.6%	64.2%	62.7%	60.6%	63.3%	45.1%	65.5%	66.0%
Retained in Different College	20.2%	21.6%	18.3%	20.0%	20.1%	20.1%	20.0%	34.5%	17.0%	15.6%
Total Retained at UNL	83.9%	85.4%	83.9%	84.2%	82.8%	80.7%	83.3%	79.6%	82.5%	81.6%
Not Retained at UNL	16.1%	14.6%	16.1%	15.8%	17.2%	19.3%	16.7%	20.4%	17.5%	18.4%
<i>UNL Retention Rate</i>	83.5%	83.9%	84.4%	84.0%	83.6%	84.0%	82.5%	83.8%	82.8%	

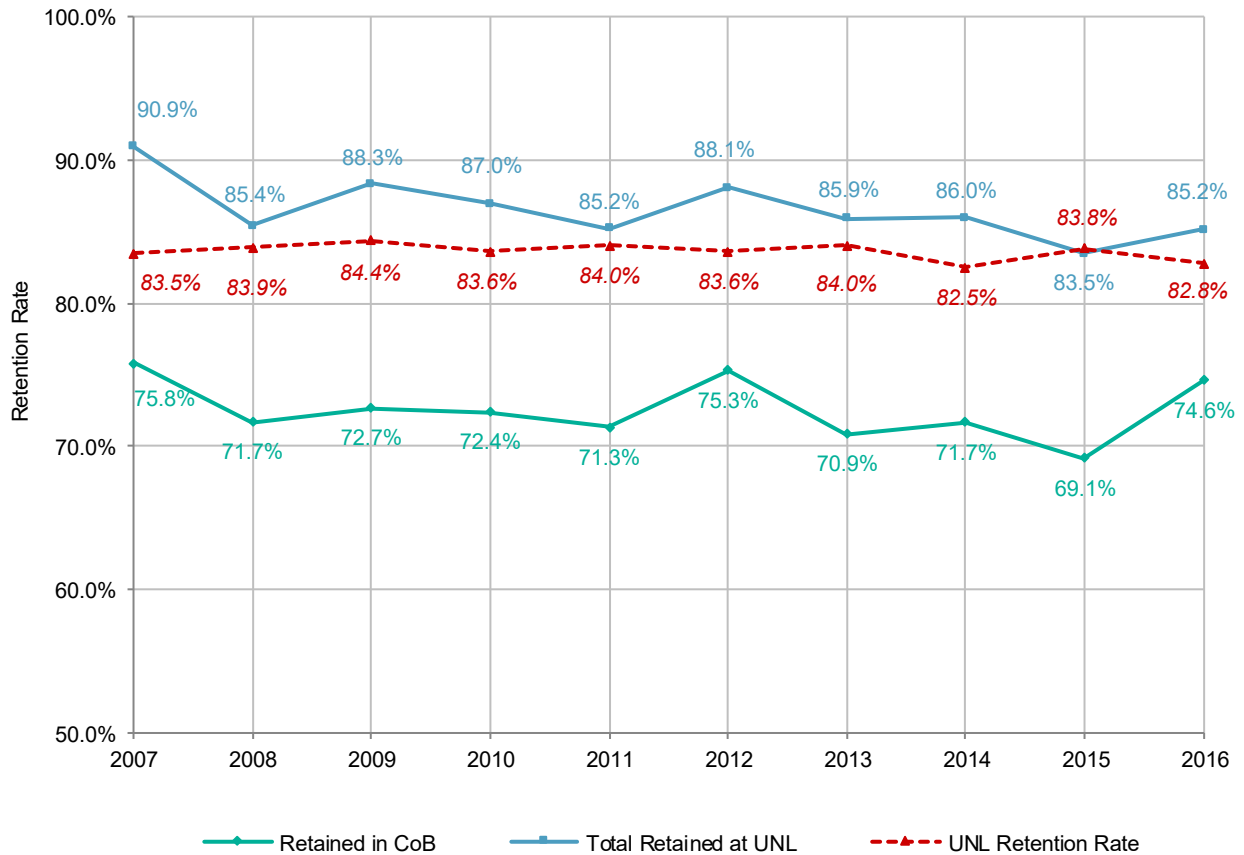
College of Arts and Sciences





College of Business (CoB)										
One-Year Retention Rates by College, 10 Year Trend (2007-2016)										
First-Time, Full-Time, Freshmen										
Retained to Second Year										
Students										
	2007	2008	2009	2010	2011	2012	2013	2014	2015	2016
Total in CoB	541	562	505	453	446	563	645	748	713	728
Retained in CoB	410	403	367	328	318	424	457	536	493	543
Retained in Different College	82	77	79	66	62	72	97	107	102	77
Total Retained at UNL	492	480	446	394	380	496	554	643	595	620
Not Retained at UNL	49	82	59	59	66	67	91	105	118	108
Percentages										
	2007	2008	2009	2010	2011	2012	2013	2014	2015	2016
Retained in CoB	75.8%	71.7%	72.7%	72.4%	71.3%	75.3%	70.9%	71.7%	69.1%	74.6%
Retained in Different College	15.2%	13.7%	15.6%	14.6%	13.9%	12.8%	15.0%	14.3%	14.3%	10.6%
Total Retained at UNL	90.9%	85.4%	88.3%	87.0%	85.2%	88.1%	85.9%	86.0%	83.5%	85.2%
Not Retained at UNL	9.1%	14.6%	11.7%	13.0%	14.8%	11.9%	14.1%	14.0%	16.5%	14.8%
<i>UNL Retention Rate</i>	83.5%	83.9%	84.4%	83.6%	84.0%	83.6%	84.0%	82.5%	83.8%	82.8%

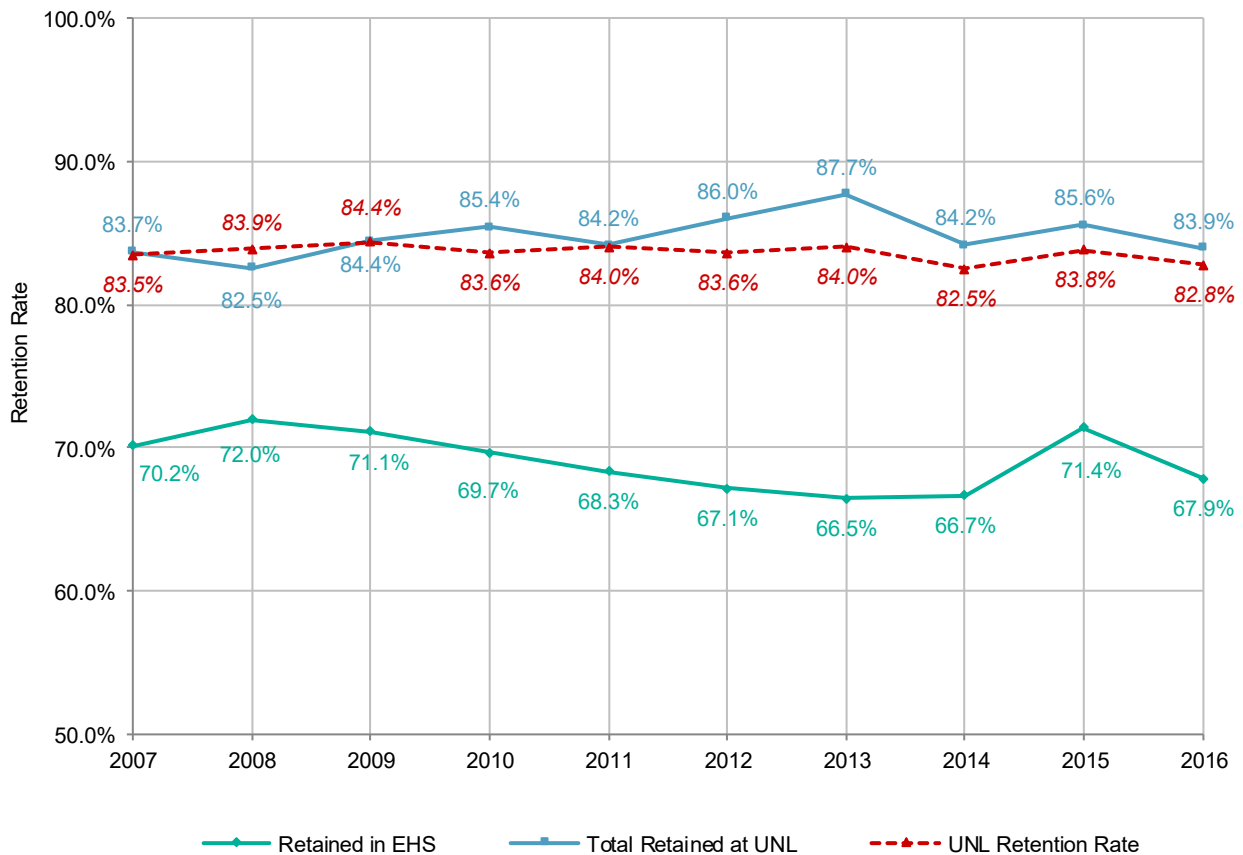
College of Business





College of Education and Human Sciences (EHS)										
One-Year Retention Rates by College, 10 Year Trend (2007-2016)										
First-Time, Full-Time, Freshmen										
Retained to Second Year										
Students										
	2007	2008	2009	2010	2011	2012	2013	2014	2015	2016
Total in EHS	399	435	405	419	480	444	480	468	444	498
Retained in EHS	280	313	288	292	328	298	319	312	317	338
Retained in Different College	54	46	54	66	76	84	102	82	63	80
Total Retained at UNL	334	359	342	358	404	382	421	394	380	418
Not Retained at UNL	65	76	63	61	76	62	59	74	64	80
Percentages										
	2007	2008	2009	2010	2011	2012	2013	2014	2015	2016
Retained in EHS	70.2%	72.0%	71.1%	69.7%	68.3%	67.1%	66.5%	66.7%	71.4%	67.9%
Retained in Different College	13.5%	10.6%	13.3%	15.8%	15.8%	18.9%	21.3%	17.5%	14.2%	16.1%
Total Retained at UNL	83.7%	82.5%	84.4%	85.4%	84.2%	86.0%	87.7%	84.2%	85.6%	83.9%
Not Retained at UNL	16.3%	17.5%	15.6%	14.6%	15.8%	14.0%	12.3%	15.8%	14.4%	16.1%
<i>UNL Retention Rate</i>	83.5%	83.9%	84.4%	83.6%	84.0%	83.6%	84.0%	82.5%	83.8%	82.8%

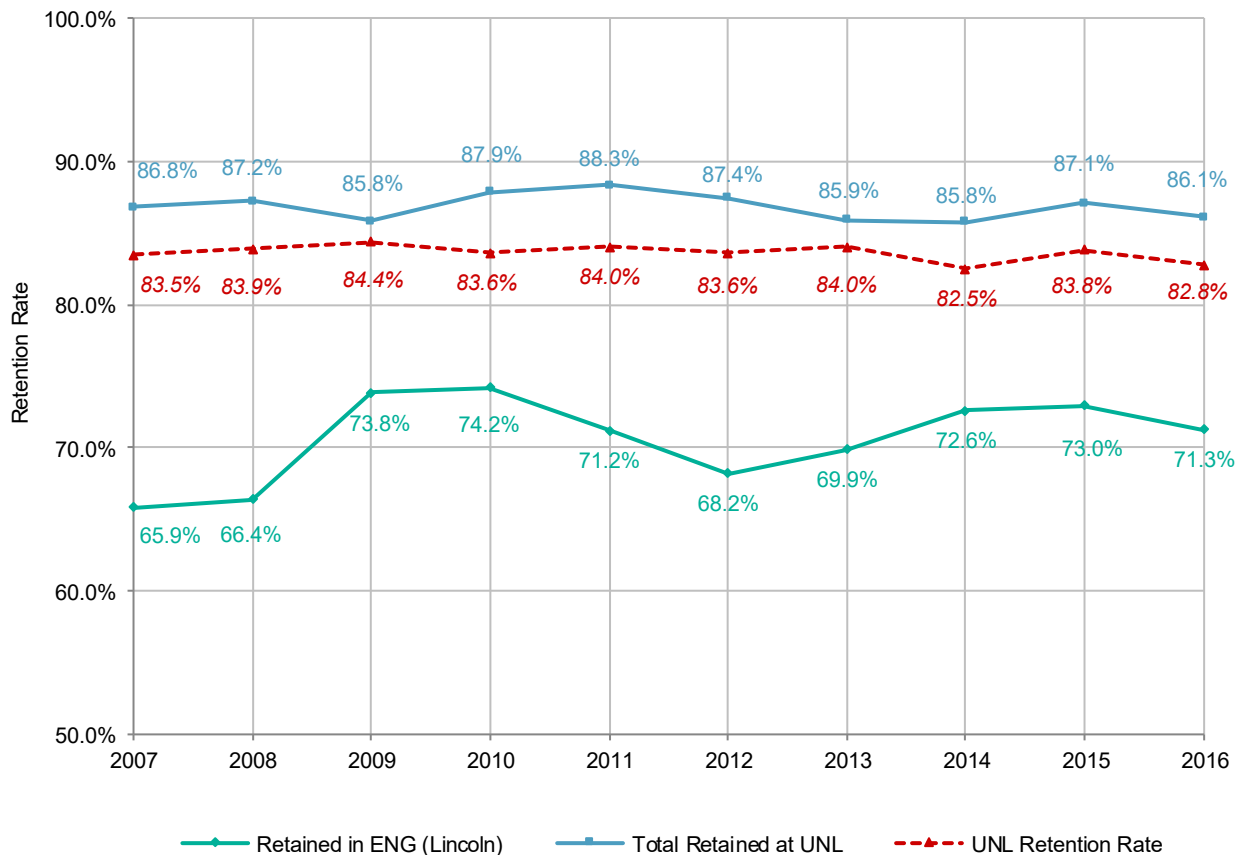
College of Education and Human Sciences





College of Engineering (ENG) - Lincoln										
One-Year Retention Rates by College, 10 Year Trend (2007-2016)										
First-Time, Full-Time, Freshmen										
Retained to Second Year										
Students										
	2007	2008	2009	2010	2011	2012	2013	2014	2015	2016
Total in ENG (Lincoln)	372	360	409	388	403	421	468	485	418	505
Retained in ENG (Lincoln)	245	239	302	288	287	287	327	352	305	360
Retained in Different College	78	75	49	53	69	81	75	64	59	75
Total Retained at UNL	323	314	351	341	356	368	402	416	364	435
Not Retained at UNL	49	46	58	47	47	53	66	69	54	70
Percentages										
	2007	2008	2009	2010	2011	2012	2013	2014	2015	2016
Retained in ENG (Lincoln)	65.9%	66.4%	73.8%	74.2%	71.2%	68.2%	69.9%	72.6%	73.0%	71.3%
Retained in Different College	21.0%	20.8%	12.0%	13.7%	17.1%	19.2%	16.0%	13.2%	14.1%	14.9%
Total Retained at UNL	86.8%	87.2%	85.8%	87.9%	88.3%	87.4%	85.9%	85.8%	87.1%	86.1%
Not Retained at UNL	13.2%	12.8%	14.2%	12.1%	11.7%	12.6%	14.1%	14.2%	12.9%	13.9%
UNL Retention Rate	83.5%	83.9%	84.4%	83.6%	84.0%	83.6%	84.0%	82.5%	83.8%	82.8%

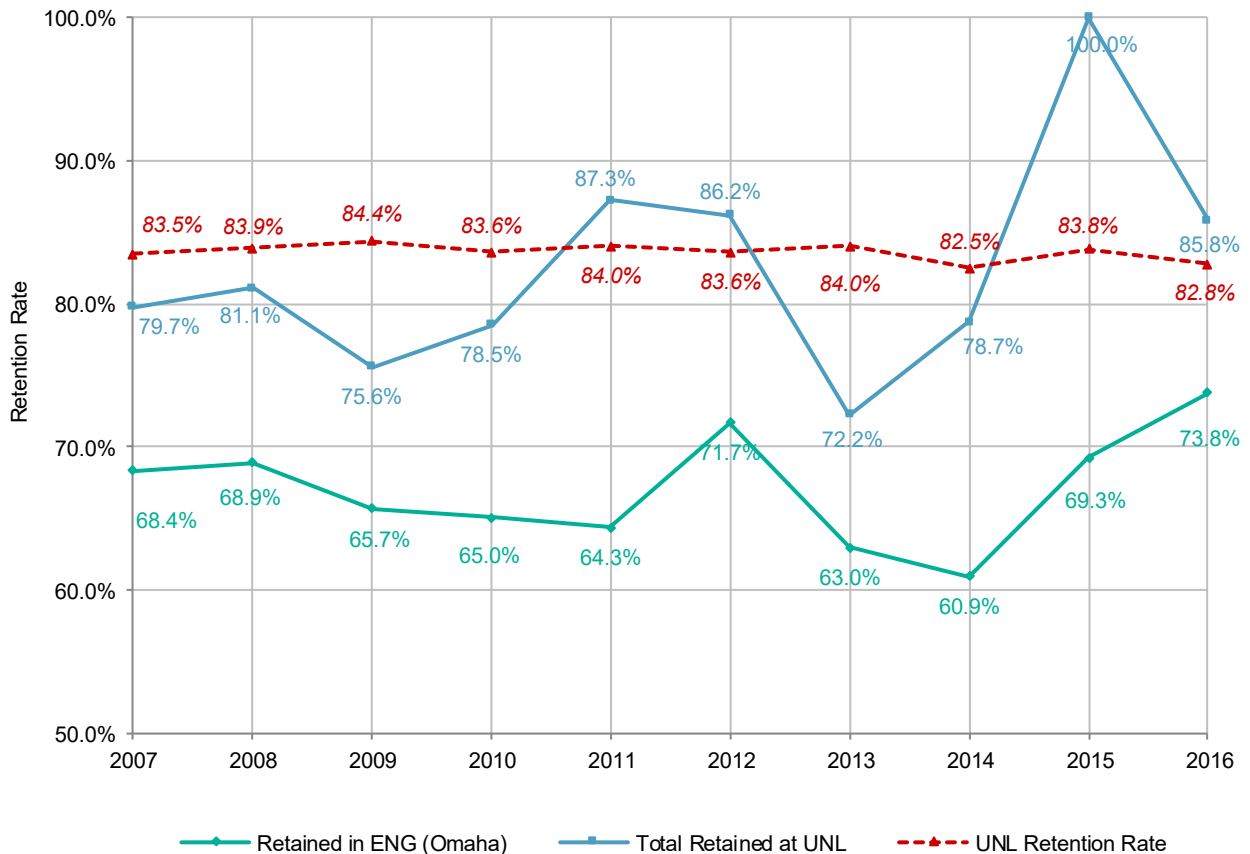
College of Engineering (Lincoln)





College of Engineering (ENG) - Omaha										
One-Year Retention Rates by College, 10 Year Trend (2007-2016)										
First-Time, Full-Time, Freshmen										
Retained to Second Year										
Students										
	2007	2008	2009	2010	2011	2012	2013	2014	2015	2016
Total in ENG (Omaha)	158	164	172	163	157	152	162	174	166	141
Retained in ENG (Omaha)	108	113	113	106	101	109	102	106	115	104
Retained in Different College	18	20	17	22	36	22	15	31	51	17
Total Retained at UNL	126	133	130	128	137	131	117	137	166	121
Not Retained at UNL	32	31	42	35	20	21	45	37	0	20
Percentages										
	2007	2008	2009	2010	2011	2012	2013	2014	2015	2016
Retained in ENG (Omaha)	68.4%	68.9%	65.7%	65.0%	64.3%	71.7%	63.0%	60.9%	69.3%	73.8%
Retained in Different College	11.4%	12.2%	9.9%	13.5%	22.9%	14.5%	9.3%	17.8%	30.7%	12.1%
Total Retained at UNL	79.7%	81.1%	75.6%	78.5%	87.3%	86.2%	72.2%	78.7%	100.0%	85.8%
Not Retained at UNL	20.3%	18.9%	24.4%	21.5%	12.7%	13.8%	27.8%	21.3%	0.0%	14.2%
<i>UNL Retention Rate</i>	83.5%	83.9%	84.4%	83.6%	84.0%	83.6%	84.0%	82.5%	83.8%	82.8%

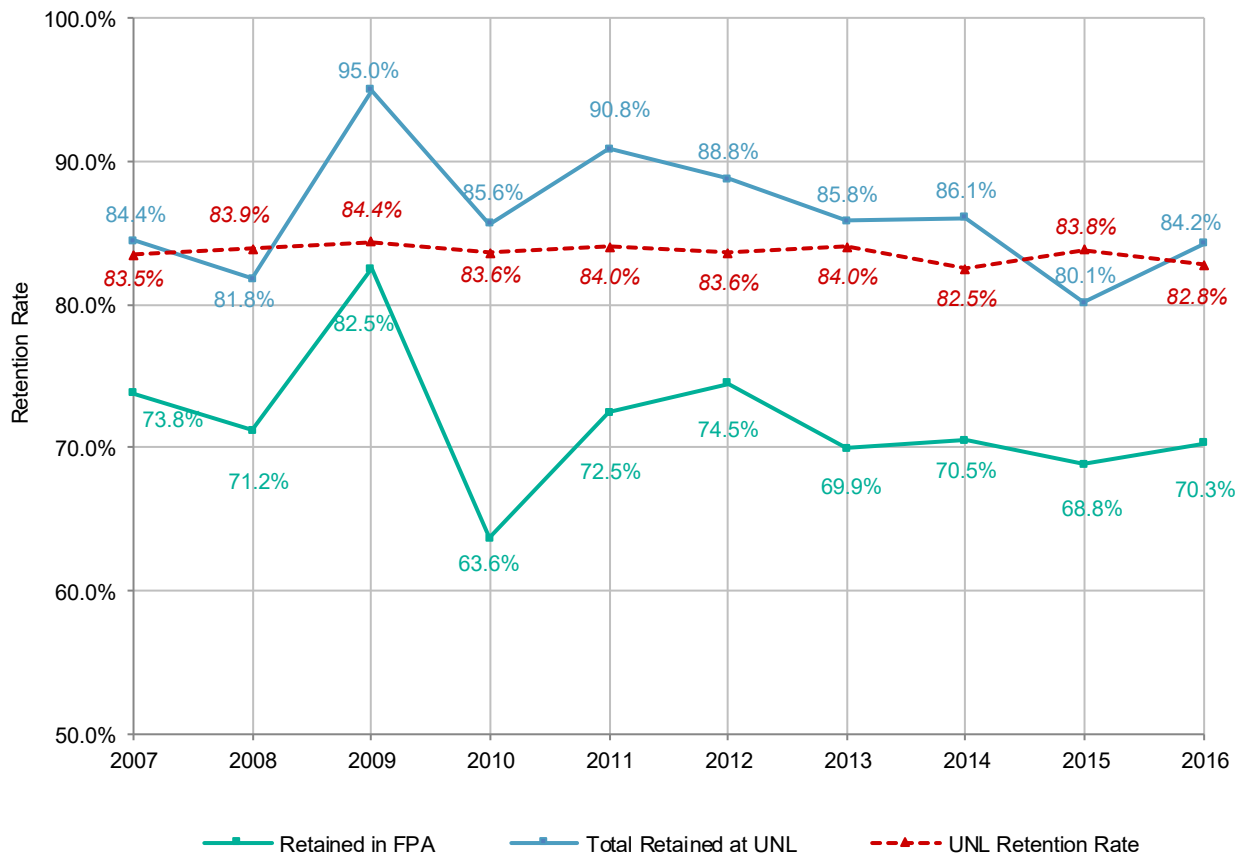
College of Engineering (Omaha)





Hixson-Lied College of Fine and Performing Arts (FPA)										
One-Year Retention Rates by College, 10 Year Trend (2007-2016)										
First-Time, Full-Time, Freshmen										
Retained to Second Year										
Students										
	2007	2008	2009	2010	2011	2012	2013	2014	2015	2016
Total in FPA	122	132	120	132	109	98	113	122	141	165
Retained in FPA	90	94	99	84	79	73	79	86	97	116
Retained in Different College	13	14	15	29	20	14	18	19	16	23
Total Retained at UNL	103	108	114	113	99	87	97	105	113	139
Not Retained at UNL	19	24	6	19	10	11	16	17	28	26
Percentages										
	2007	2008	2009	2010	2011	2012	2013	2014	2015	2016
Retained in FPA	73.8%	71.2%	82.5%	63.6%	72.5%	74.5%	69.9%	70.5%	68.8%	70.3%
Retained in Different College	10.7%	10.6%	12.5%	22.0%	18.3%	14.3%	15.9%	15.6%	11.3%	13.9%
Total Retained at UNL	84.4%	81.8%	95.0%	85.6%	90.8%	88.8%	85.8%	86.1%	80.1%	84.2%
Not Retained at UNL	15.6%	18.2%	5.0%	14.4%	9.2%	11.2%	14.2%	13.9%	19.9%	15.8%
<i>UNL Retention Rate</i>	83.5%	83.9%	84.4%	83.6%	84.0%	83.6%	84.0%	82.5%	83.8%	82.8%

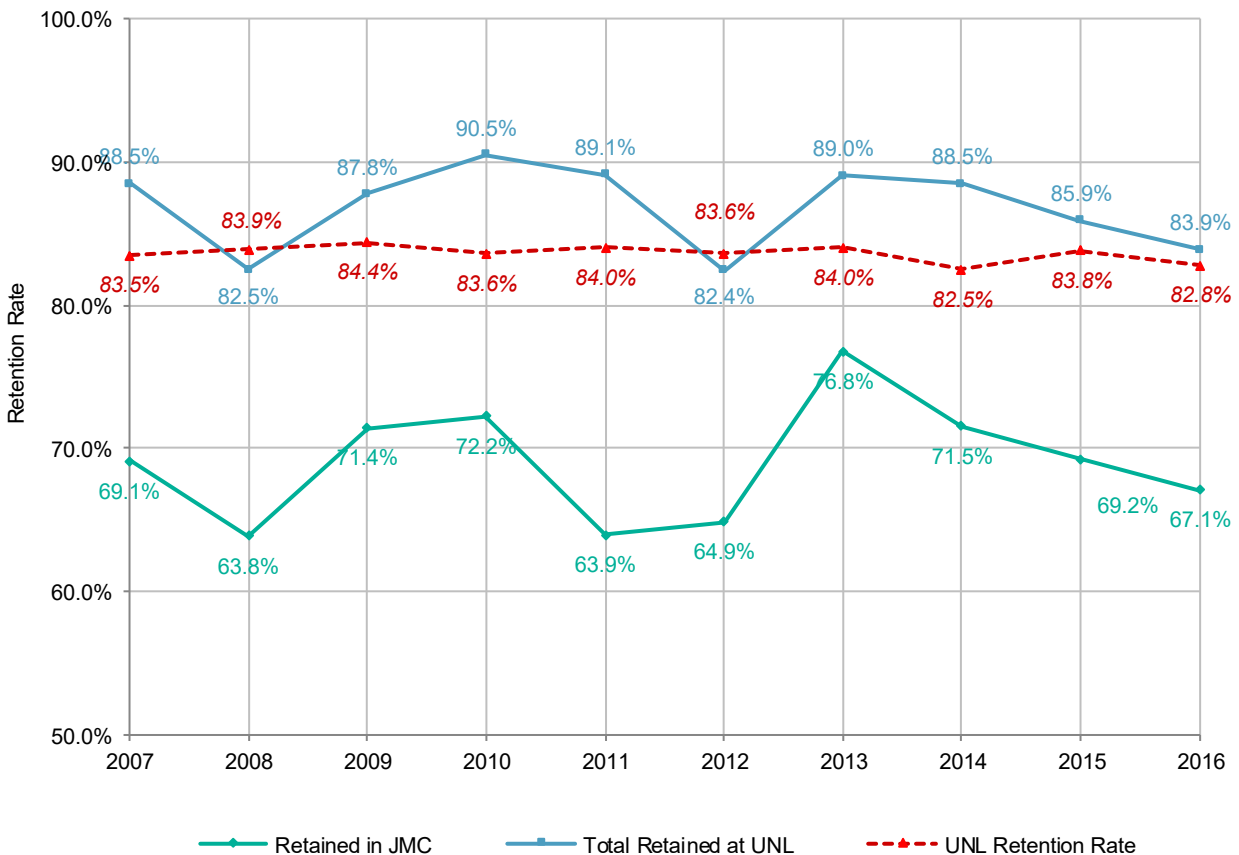
Hixson-Lied College of Fine and Performing Arts





College of Journalism and Mass Communications (JMC)										
One-Year Retention Rates by College, 10 Year Trend (2007-2016)										
First-Time, Full-Time, Freshmen										
Retained to Second Year										
Students										
	2007	2008	2009	2010	2011	2012	2013	2014	2015	2016
Total in JMC	165	177	147	126	147	148	155	165	156	149
Retained in JMC	114	113	105	91	94	96	119	118	108	100
Retained in Different College	32	33	24	23	37	26	19	28	26	25
Total Retained at UNL	146	146	129	114	131	122	138	146	134	125
Not Retained at UNL	19	31	18	12	16	26	17	19	22	24
Percentages										
	2007	2008	2009	2010	2011	2012	2013	2014	2015	2016
Retained in JMC	69.1%	63.8%	71.4%	72.2%	63.9%	64.9%	76.8%	71.5%	69.2%	67.1%
Retained in Different College	19.4%	18.6%	16.3%	18.3%	25.2%	17.6%	12.3%	17.0%	16.7%	16.8%
Total Retained at UNL	88.5%	82.5%	87.8%	90.5%	89.1%	82.4%	89.0%	88.5%	85.9%	83.9%
Not Retained at UNL	11.5%	17.5%	12.2%	9.5%	10.9%	17.6%	11.0%	11.5%	14.1%	16.1%
<i>UNL Retention Rate</i>	83.5%	83.9%	84.4%	83.6%	84.0%	83.6%	84.0%	82.5%	83.8%	82.8%

College of Journalism and Mass Communications





Explore Center (EC)										
One-Year Retention Rates by College, 10 Year Trend (2007-2016)										
First-Time, Full-Time, Freshmen										
Retained to Second Year										
Students										
	2007	2008	2009	2010	2011	2012	2013	2014	2015	2016
Total in EC	1,081	976	796	809	882	614	784	700	1,295	1,293
Retained in EC	461	318	276	240	259	163	227	165	389	392
Retained in Different College	381	469	371	385	438	313	410	369	589	634
Total Retained at UNL	842	787	647	625	697	476	637	534	978	1,026
Not Retained at UNL	239	189	149	184	185	138	147	166	317	267
Percentages										
	2007	2008	2009	2010	2011	2012	2013	2014	2015	2016
Retained in EC	42.6%	32.6%	34.7%	29.7%	29.4%	26.5%	29.0%	23.6%	30.0%	30.3%
Retained in Different College	35.2%	48.1%	46.6%	47.6%	49.7%	51.0%	52.3%	52.7%	45.5%	49.0%
Total Retained at UNL	77.9%	80.6%	81.3%	77.3%	79.0%	77.5%	81.3%	76.3%	75.5%	79.4%
Not Retained at UNL	22.1%	19.4%	18.7%	22.7%	21.0%	22.5%	18.8%	23.7%	24.5%	20.6%
<i>UNL Retention Rate</i>	83.5%	83.9%	84.4%	83.6%	84.0%	83.6%	84.0%	82.5%	83.8%	82.8%

Explore Center

