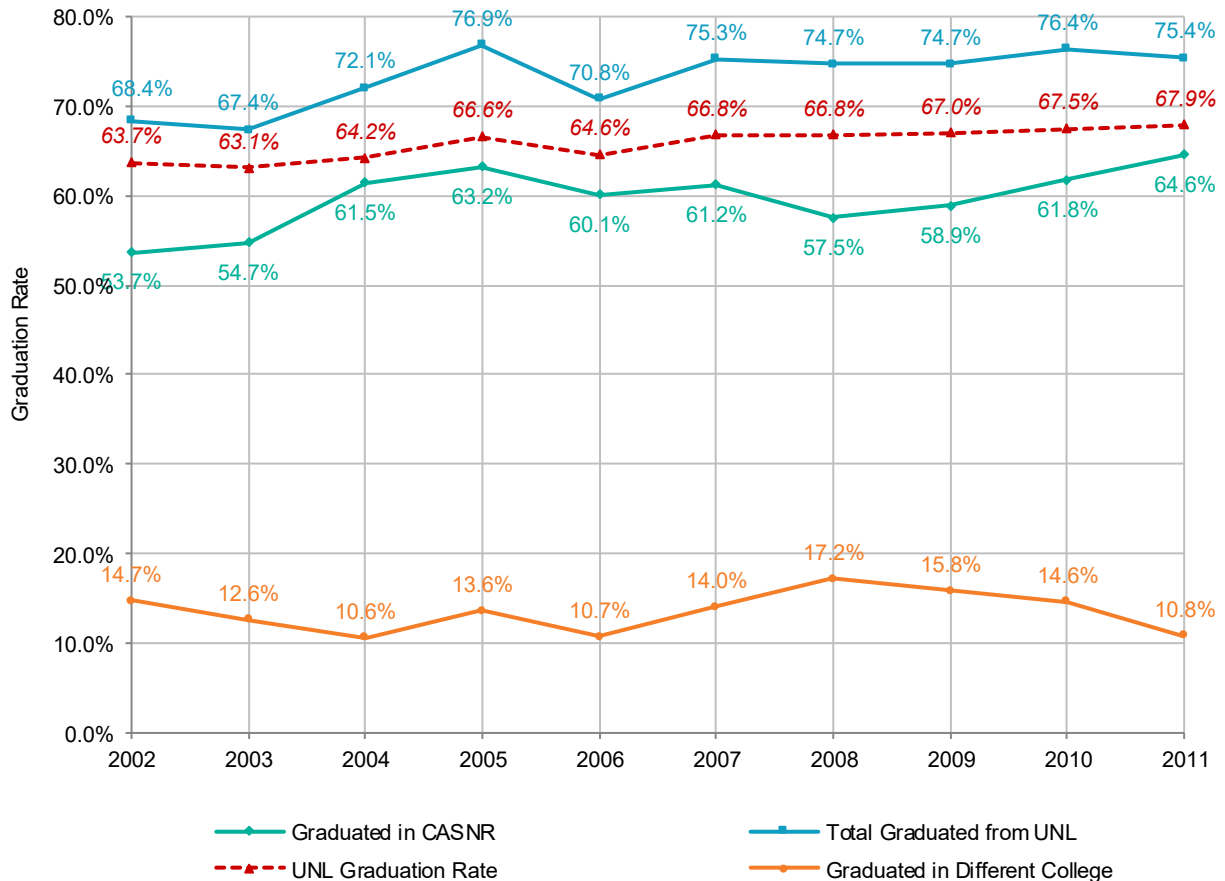




College of Agricultural Sciences and Natural Resources (CASNR)										
Six-Year Graduation Rates by College, 10 Year Trend (2002-2011)										
Matriculated in CASNR as First-Time, Full-Time, Freshmen										
Students										
	2002	2003	2004	2005	2006	2007	2008	2009	2010	2011
Total in CASNR	231	190	179	242	243	299	332	316	343	342
Graduated in CASNR	124	104	110	153	146	183	191	186	212	221
Graduated in Different College	34	24	19	33	26	42	57	50	50	37
Total Graduated from UNL	158	128	129	186	172	225	248	236	262	258
Not Graduated from UNL	73	62	50	56	71	74	84	80	81	84
Percentages										
	2002	2003	2004	2005	2006	2007	2008	2009	2010	2011
Graduated in CASNR	53.7%	54.7%	61.5%	63.2%	60.1%	61.2%	57.5%	58.9%	61.8%	64.6%
Graduated in Different College	14.7%	12.6%	10.6%	13.6%	10.7%	14.0%	17.2%	15.8%	14.6%	10.8%
Total Graduated from UNL	68.4%	67.4%	72.1%	76.9%	70.8%	75.3%	74.7%	74.7%	76.4%	75.4%
Not Graduated from UNL	31.6%	32.6%	27.9%	23.1%	29.2%	24.7%	25.3%	25.3%	23.6%	24.6%
<i>UNL Graduation Rate</i>	63.7%	63.1%	64.2%	66.6%	64.6%	66.8%	66.8%	67.0%	67.5%	67.9%

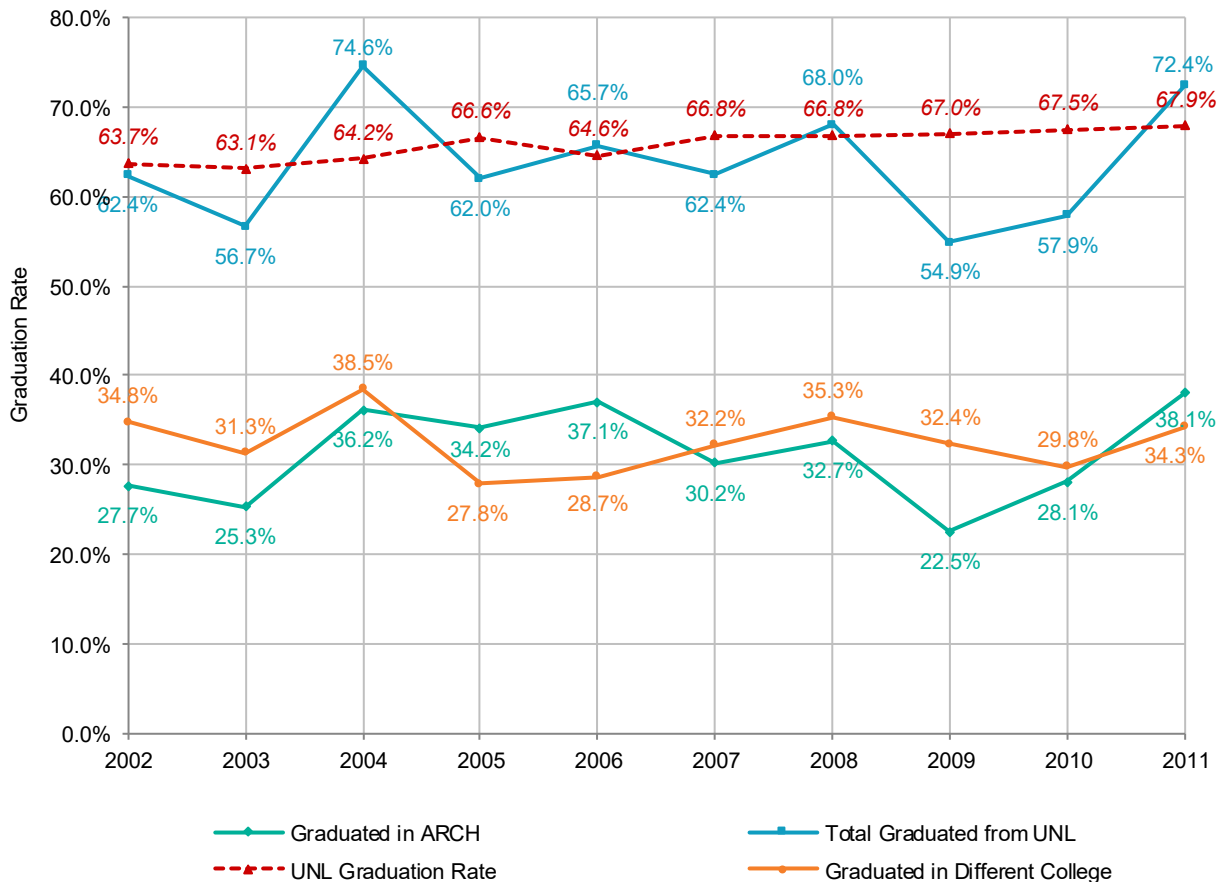
College of Agricultural Sciences and Natural Resources





College of Architecture (ARCH)										
Six-Year Graduation Rates by College, 10 Year Trend (2002-2011)										
Matriculated in ARCH as First-Time, Full-Time, Freshmen										
Students										
	2002	2003	2004	2005	2006	2007	2008	2009	2010	2011
Total in ARCH	141	150	130	158	143	149	150	102	114	105
Graduated in ARCH	39	38	47	54	53	45	49	23	32	40
Graduated in Different College	49	47	50	44	41	48	53	33	34	36
Total Graduated from UNL	88	85	97	98	94	93	102	56	66	76
Not Graduated from UNL	53	65	33	60	49	56	48	46	48	29
Percentages										
	2002	2003	2004	2005	2006	2007	2008	2009	2010	2011
Graduated in ARCH	27.7%	25.3%	36.2%	34.2%	37.1%	30.2%	32.7%	22.5%	28.1%	38.1%
Graduated in Different College	34.8%	31.3%	38.5%	27.8%	28.7%	32.2%	35.3%	32.4%	29.8%	34.3%
Total Graduated from UNL	62.4%	56.7%	74.6%	62.0%	65.7%	62.4%	68.0%	54.9%	57.9%	72.4%
Not Graduated from UNL	37.6%	43.3%	25.4%	38.0%	34.3%	37.6%	32.0%	45.1%	42.1%	27.6%
UNL Graduation Rate	63.7%	63.1%	64.2%	66.6%	64.6%	66.8%	66.8%	67.0%	67.5%	67.9%

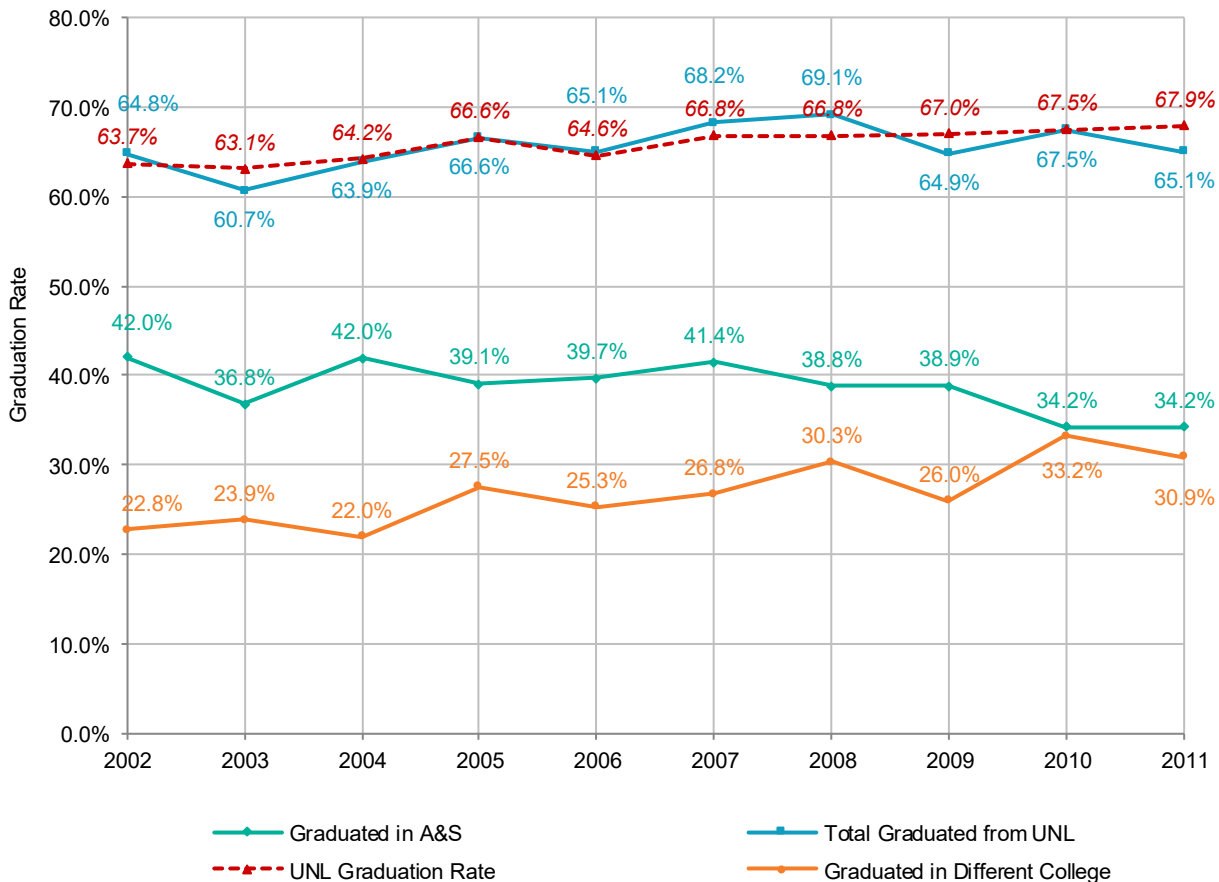
College of Architecture





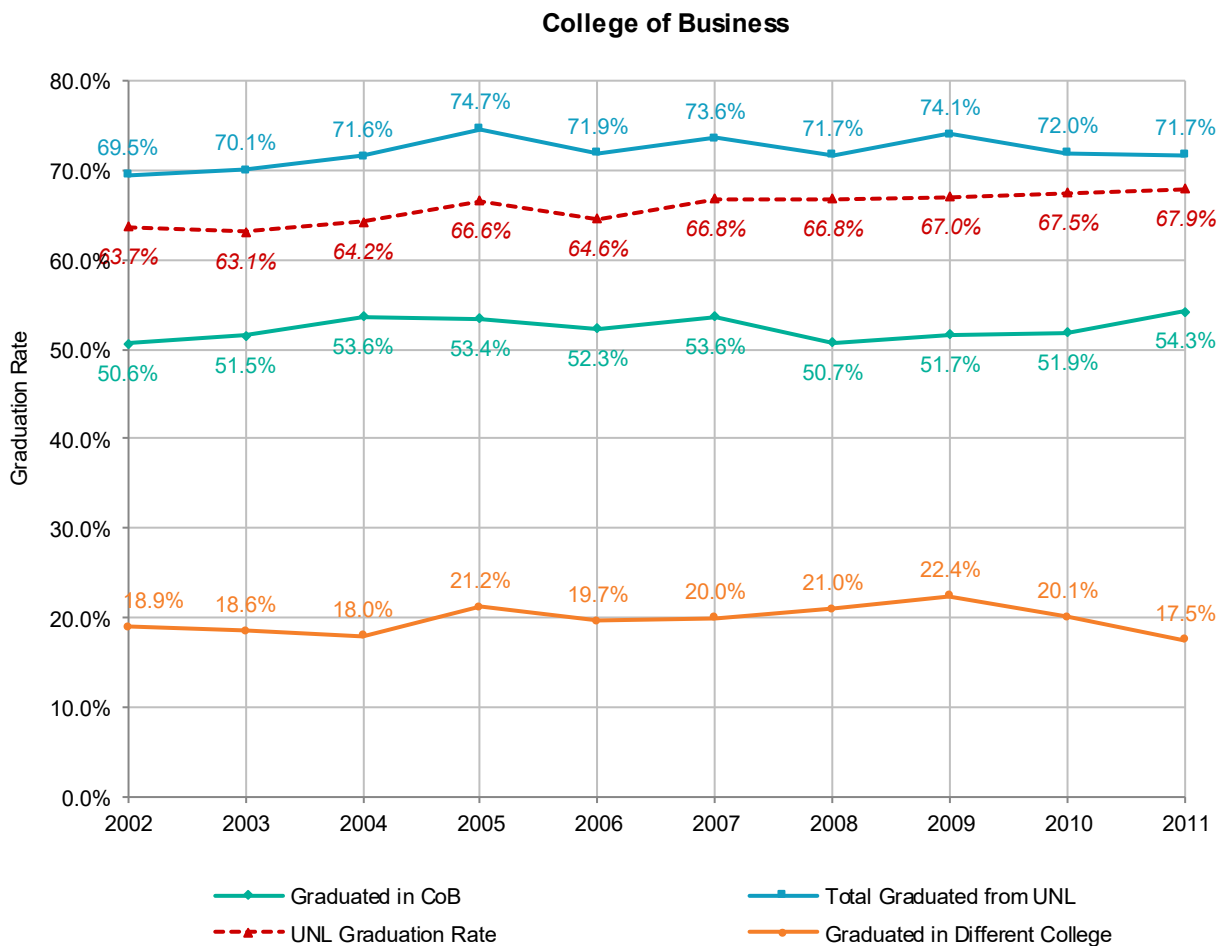
College of Arts and Sciences (A&S)										
Six-Year Graduation Rates by College, 10 Year Trend (2002-2011)										
Matriculated in A&S as First-Time, Full-Time, Freshmen										
Students										
	2002	2003	2004	2005	2006	2007	2008	2009	2010	2011
Total in A&S	852	896	760	857	999	929	878	993	1092	985
Graduated in A&S	358	330	319	335	397	385	341	386	374	337
Graduated in Different College	194	214	167	236	253	249	266	258	363	304
Total Graduated from UNL	552	544	486	571	650	634	607	644	737	641
Not Graduated from UNL	300	352	274	286	349	295	271	349	355	344
Percentages										
	2002	2003	2004	2005	2006	2007	2008	2009	2010	2011
Graduated in A&S	42.0%	36.8%	42.0%	39.1%	39.7%	41.4%	38.8%	38.9%	34.2%	34.2%
Graduated in Different College	22.8%	23.9%	22.0%	27.5%	25.3%	26.8%	30.3%	26.0%	33.2%	30.9%
Total Graduated from UNL	64.8%	60.7%	63.9%	66.6%	65.1%	68.2%	69.1%	64.9%	67.5%	65.1%
Not Graduated from UNL	35.2%	39.3%	36.1%	33.4%	34.9%	31.8%	30.9%	35.1%	32.5%	34.9%
UNL Graduation Rate	63.7%	63.1%	64.2%	66.6%	64.6%	66.8%	66.8%	67.0%	67.5%	67.9%

College of Arts and Sciences





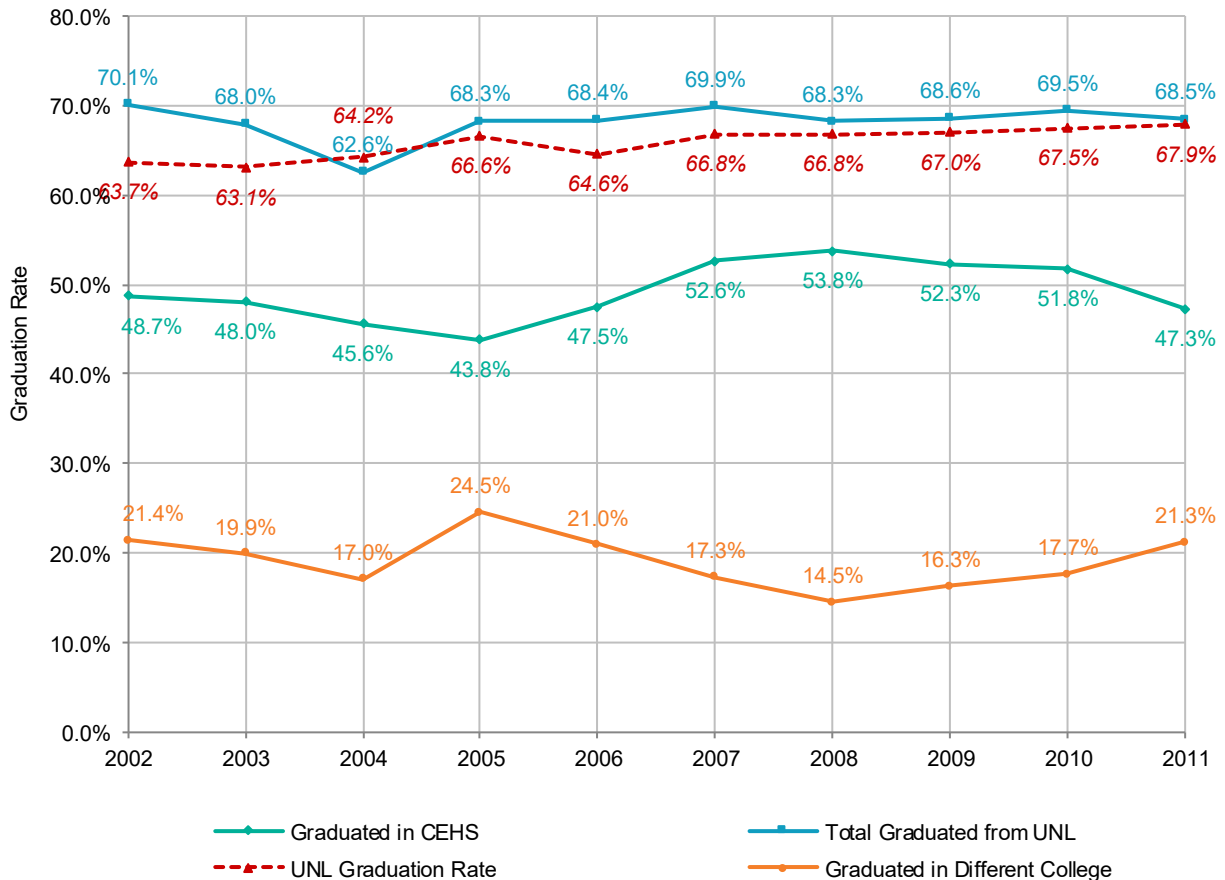
College of Business (CoB)										
Six-Year Graduation Rates by College, 10 Year Trend (2002-2011)										
Matriculated in CoB as First-Time, Full-Time, Freshmen										
Students										
	2002	2003	2004	2005	2006	2007	2008	2009	2010	2011
Total in CoB	502	458	412	509	463	541	562	505	453	446
Graduated in CoB	254	236	221	272	242	290	285	261	235	242
Graduated in Different College	95	85	74	108	91	108	118	113	91	78
Total Graduated from UNL	349	321	295	380	333	398	403	374	326	320
Not Graduated from UNL	153	137	117	129	130	143	159	131	127	126
Percentages										
	2002	2003	2004	2005	2006	2007	2008	2009	2010	2011
Graduated in CoB	50.6%	51.5%	53.6%	53.4%	52.3%	53.6%	50.7%	51.7%	51.9%	54.3%
Graduated in Different College	18.9%	18.6%	18.0%	21.2%	19.7%	20.0%	21.0%	22.4%	20.1%	17.5%
Total Graduated from UNL	69.5%	70.1%	71.6%	74.7%	71.9%	73.6%	71.7%	74.1%	72.0%	71.7%
Not Graduated from UNL	30.5%	29.9%	28.4%	25.3%	28.1%	26.4%	28.3%	25.9%	28.0%	28.3%
<i>UNL Graduation Rate</i>	63.7%	63.1%	64.2%	66.6%	64.6%	66.8%	66.8%	67.0%	67.5%	67.9%





College of Education and Human Sciences (CEHS)										
Six-Year Graduation Rates by College, 10 Year Trend (2002-2011)										
Matriculated in CEHS as First-Time, Full-Time, Freshmen										
Students										
	2002	2003	2004	2005	2006	2007	2008	2009	2010	2011
Total in CEHS	345	306	305	322	377	399	435	405	419	480
Graduated in CEHS	168	147	139	141	179	210	234	212	217	227
Graduated in Different College	74	61	52	79	79	69	63	66	74	102
Total Graduated from UNL	242	208	191	220	258	279	297	278	291	329
Not Graduated from UNL	103	98	114	102	119	120	138	127	128	151
Percentages										
	2002	2003	2004	2005	2006	2007	2008	2009	2010	2011
Graduated in CEHS	48.7%	48.0%	45.6%	43.8%	47.5%	52.6%	53.8%	52.3%	51.8%	47.3%
Graduated in Different College	21.4%	19.9%	17.0%	24.5%	21.0%	17.3%	14.5%	16.3%	17.7%	21.3%
Total Graduated from UNL	70.1%	68.0%	62.6%	68.3%	68.4%	69.9%	68.3%	68.6%	69.5%	68.5%
Not Graduated from UNL	29.9%	32.0%	37.4%	31.7%	31.6%	30.1%	31.7%	31.4%	30.5%	31.5%
<i>UNL Graduation Rate</i>	63.7%	63.1%	64.2%	66.6%	64.6%	66.8%	66.8%	67.0%	67.5%	67.9%

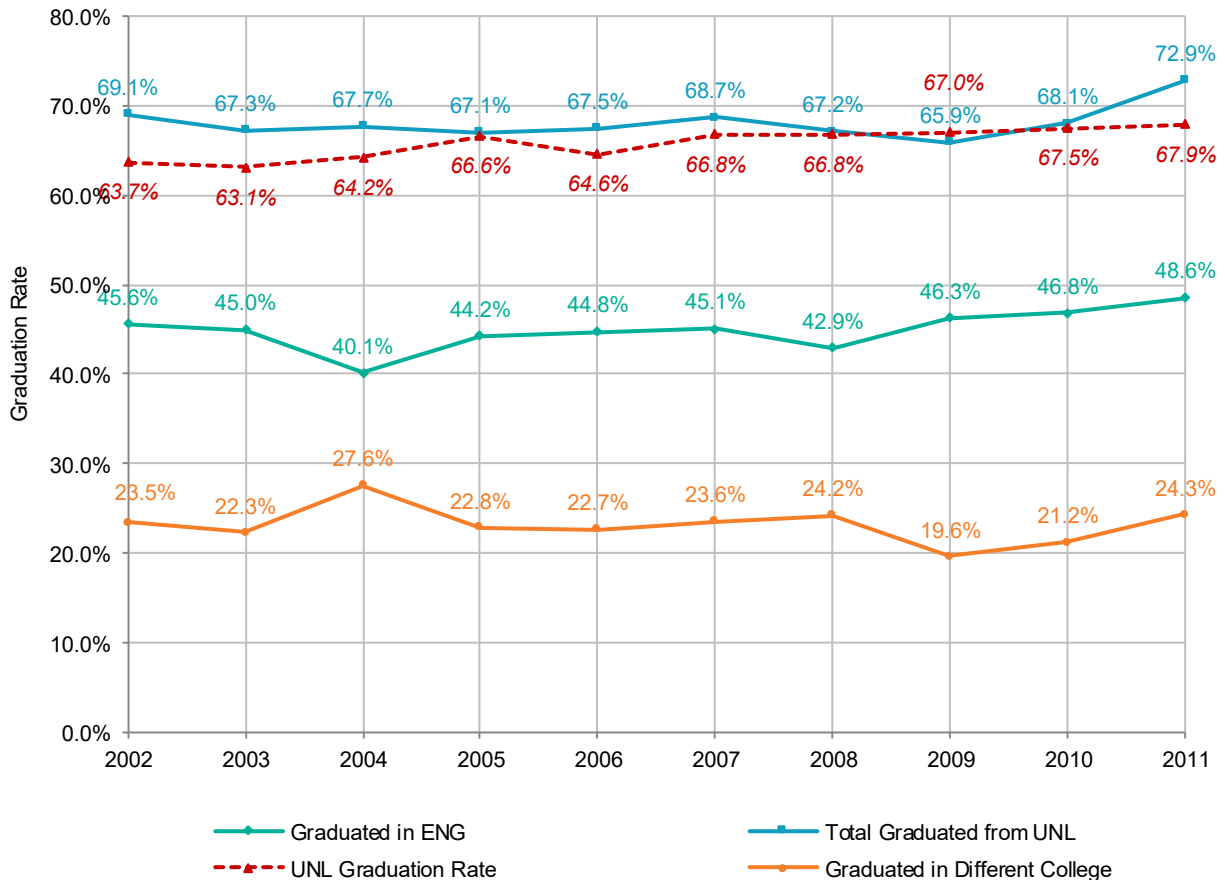
College of Education and Human Sciences





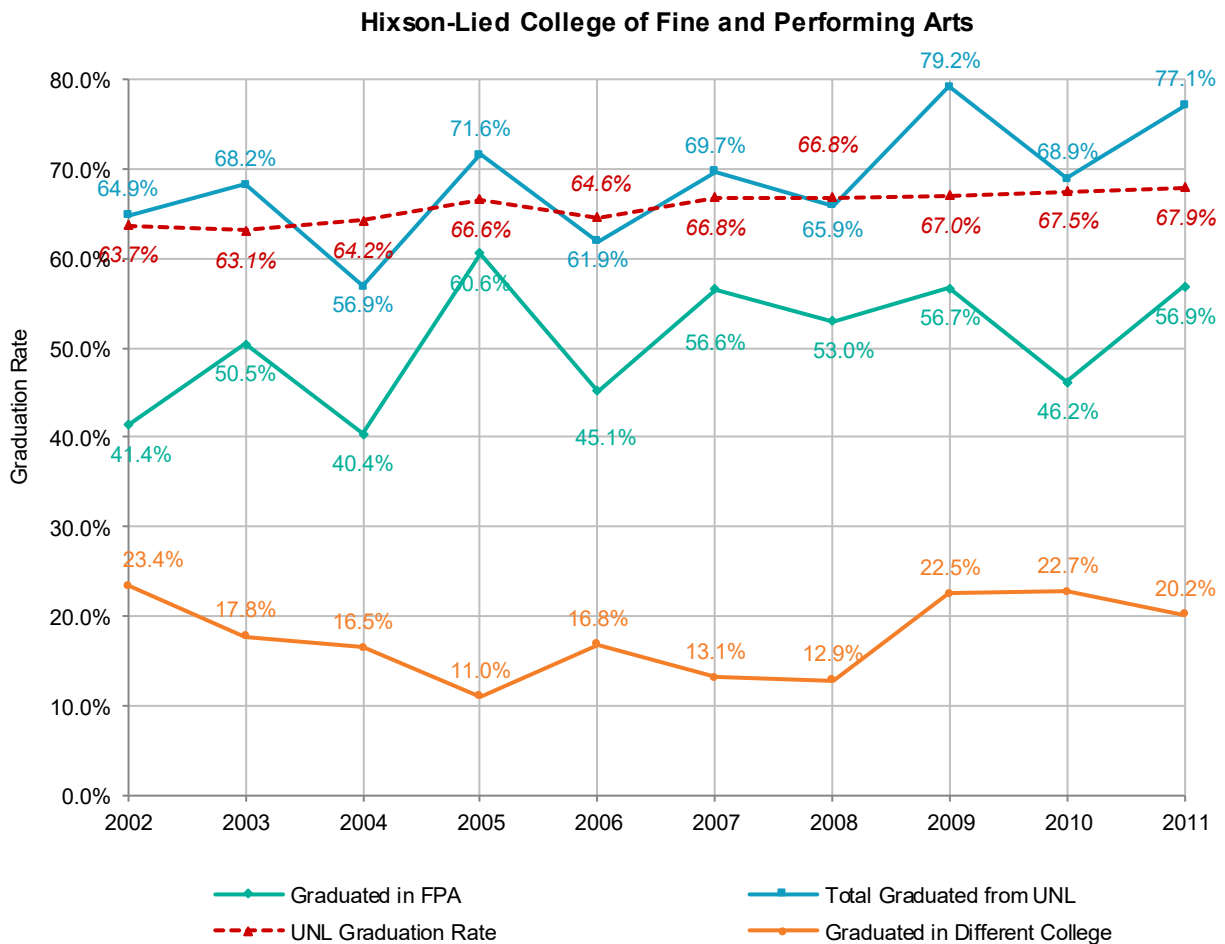
College of Engineering (ENG)										
Six-Year Graduation Rates by College, 10 Year Trend (2002-2011)										
Matriculated in ENG as First-Time, Full-Time, Freshmen										
Students										
	2002	2003	2004	2005	2006	2007	2008	2009	2010	2011
Total in ENG	443	471	446	495	507	530	524	581	551	560
Graduated in ENG	202	212	179	219	227	239	225	269	258	272
Graduated in Different College	104	105	123	113	115	125	127	114	117	136
Total Graduated from UNL	306	317	302	332	342	364	352	383	375	408
Not Graduated from UNL	137	154	144	163	165	166	172	198	176	152
Percentages										
	2002	2003	2004	2005	2006	2007	2008	2009	2010	2011
Graduated in ENG	45.6%	45.0%	40.1%	44.2%	44.8%	45.1%	42.9%	46.3%	46.8%	48.6%
Graduated in Different College	23.5%	22.3%	27.6%	22.8%	22.7%	23.6%	24.2%	19.6%	21.2%	24.3%
Total Graduated from UNL	69.1%	67.3%	67.7%	67.1%	67.5%	68.7%	67.2%	65.9%	68.1%	72.9%
Not Graduated from UNL	30.9%	32.7%	32.3%	32.9%	32.5%	31.3%	32.8%	34.1%	31.9%	27.1%
UNL Graduation Rate	63.7%	63.1%	64.2%	66.6%	64.6%	66.8%	66.8%	67.0%	67.5%	67.9%

College of Engineering





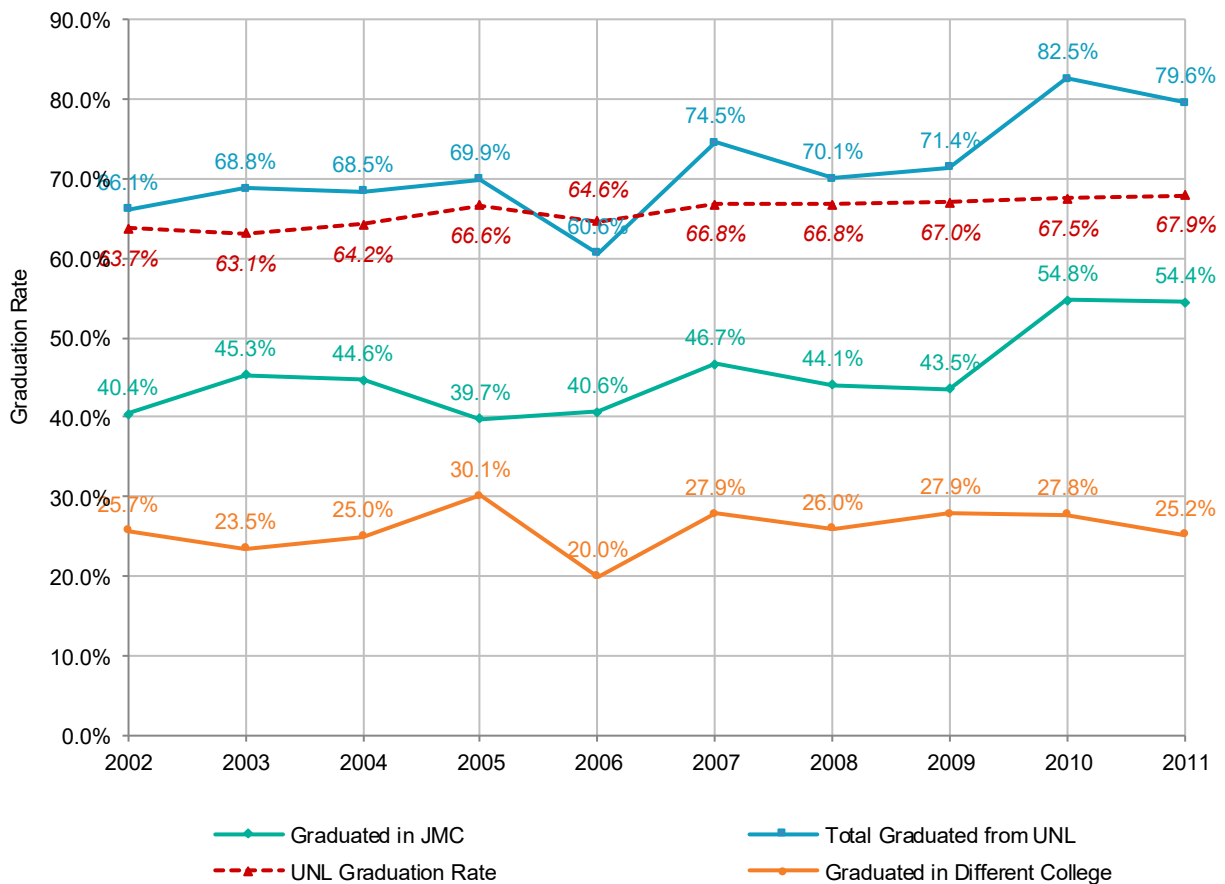
Hixson-Lied College of Fine and Performing Arts (FPA)										
Six-Year Graduation Rates by College, 10 Year Trend (2002-2011)										
Matriculated in FPA as First-Time, Full-Time, Freshmen										
Students										
	2002	2003	2004	2005	2006	2007	2008	2009	2010	2011
Total in FPA	111	107	109	109	113	122	132	120	132	109
Graduated in FPA	46	54	44	66	51	69	70	68	61	62
Graduated in Different College	26	19	18	12	19	16	17	27	30	22
Total Graduated from UNL	72	73	62	78	70	85	87	95	91	84
Not Graduated from UNL	39	34	47	31	43	37	45	25	41	25
Percentages										
	2002	2003	2004	2005	2006	2007	2008	2009	2010	2011
Graduated in FPA	41.4%	50.5%	40.4%	60.6%	45.1%	56.6%	53.0%	56.7%	46.2%	56.9%
Graduated in Different College	23.4%	17.8%	16.5%	11.0%	16.8%	13.1%	12.9%	22.5%	22.7%	20.2%
Total Graduated from UNL	64.9%	68.2%	56.9%	71.6%	61.9%	69.7%	65.9%	79.2%	68.9%	77.1%
Not Graduated from UNL	35.1%	31.8%	43.1%	28.4%	38.1%	30.3%	34.1%	20.8%	31.1%	22.9%
<i>UNL Graduation Rate</i>	63.7%	63.1%	64.2%	66.6%	64.6%	66.8%	66.8%	67.0%	67.5%	67.9%





College of Journalism and Mass Communications (JMC)										
Six-Year Graduation Rates by College, 10 Year Trend (2002-2011)										
Matriculated in JMC as First-Time, Full-Time, Freshmen										
Students										
	2002	2003	2004	2005	2006	2007	2008	2009	2010	2011
Total in JMC	171	170	168	146	165	165	177	147	126	147
Graduated in JMC	69	77	75	58	67	77	78	64	69	80
Graduated in Different College	44	40	42	44	33	46	46	41	35	37
Total Graduated from UNL	113	117	115	102	100	123	124	105	104	117
Not Graduated from UNL	58	53	53	44	65	42	53	42	22	30
Percentages										
	2002	2003	2004	2005	2006	2007	2008	2009	2010	2011
Graduated in JMC	40.4%	45.3%	44.6%	39.7%	40.6%	46.7%	44.1%	43.5%	54.8%	54.4%
Graduated in Different College	25.7%	23.5%	25.0%	30.1%	20.0%	27.9%	26.0%	27.9%	27.8%	25.2%
Total Graduated from UNL	66.1%	68.8%	68.5%	69.9%	60.6%	74.5%	70.1%	71.4%	82.5%	79.6%
Not Graduated from UNL	33.9%	31.2%	31.5%	30.1%	39.4%	25.5%	29.9%	28.6%	17.5%	20.4%
<i>UNL Graduation Rate</i>	63.7%	63.1%	64.2%	66.6%	64.6%	66.8%	66.8%	67.0%	67.5%	67.9%

College of Journalism and Mass Communications





Explore Center (EC)										
Six-Year Graduation Rates by College, 10 Year Trend (2002-2011)										
Matriculated in EPPA as First-Time, Full-Time, Freshmen										
Students										
	2002	2003	2004	2005	2006	2007	2008	2009	2010	2011
Total in EC	819	891	726	700	816	1,080	975	792	809	882
Graduated in EC	0	0	0	0	0	0	0	0	0	0
Graduated in Different College	407	497	400	389	454	613	562	487	476	523
Total Graduated from UNL	407	497	400	389	454	613	562	487	476	523
Not Graduated from UNL	412	394	326	311	362	467	413	305	333	359
Percentages										
	2002	2003	2004	2005	2006	2007	2008	2009	2010	2011
Graduated in EC	0.0%	0.0%	0.0%	0.0%	0.0%	0.0%	0.0%	0.0%	0.0%	0.0%
Graduated in Different College	49.7%	55.8%	55.1%	55.6%	55.6%	56.8%	57.6%	61.5%	58.8%	59.3%
Total Graduated from UNL	49.7%	55.8%	55.1%	55.6%	55.6%	56.8%	57.6%	61.5%	58.8%	59.3%
Not Graduated from UNL	50.3%	44.2%	44.9%	44.4%	44.4%	43.2%	42.4%	38.5%	41.2%	40.7%
<i>UNL Graduation Rate</i>	63.7%	63.1%	64.2%	66.6%	64.6%	66.8%	66.8%	67.0%	67.5%	67.9%

Explore Center

