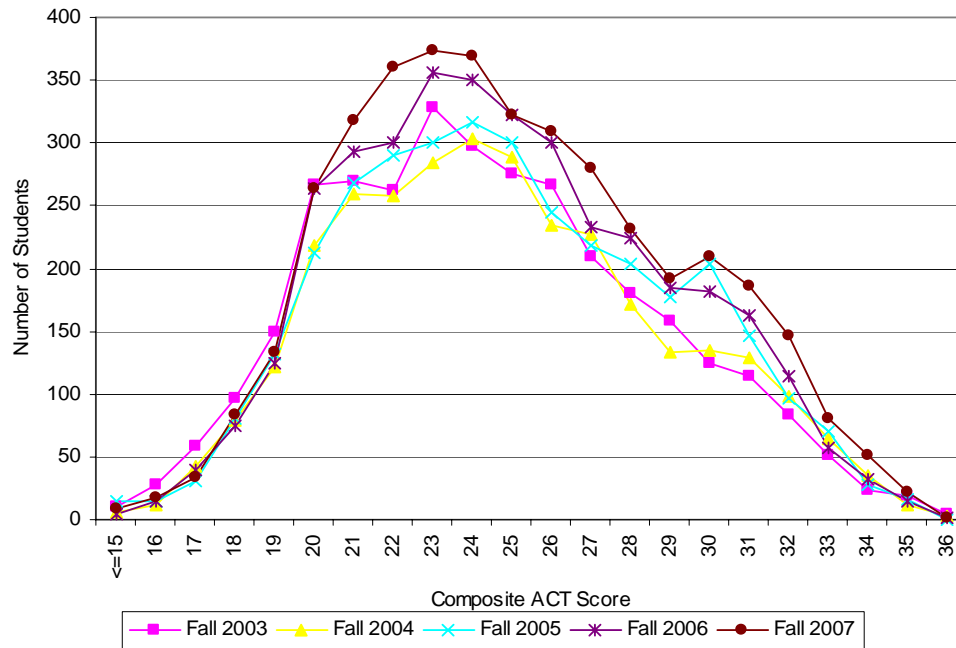




First Time Freshmen ACT Scores - 5 Year Trend



Composite Score	Fall 2003	Fall 2004	Fall 2005	Fall 2006	Fall 2007
15 & below	10	6	14	4	9
16	28	11	15	15	18
17	59	43	31	39	33
18	97	79	81	74	84
19	150	122	132	124	134
20	266	218	212	264	264
21	270	259	268	293	318
22	262	258	290	301	360
23	328	284	301	356	373
24	297	304	316	350	369
25	276	288	300	322	323
26	267	235	244	301	309
27	210	227	219	233	280
28	180	172	203	224	232
29	158	134	178	184	192
30	125	135	203	181	210
31	114	129	146	163	186
32	83	98	97	114	146
33	52	64	70	57	80
34	24	35	28	32	52
35	19	11	16	15	22
36	4	3	0	2	1

NOTE: Freshmen are required to submit either ACT or SAT test scores. The majority submit ACT.

Last updated: September 7, 2007