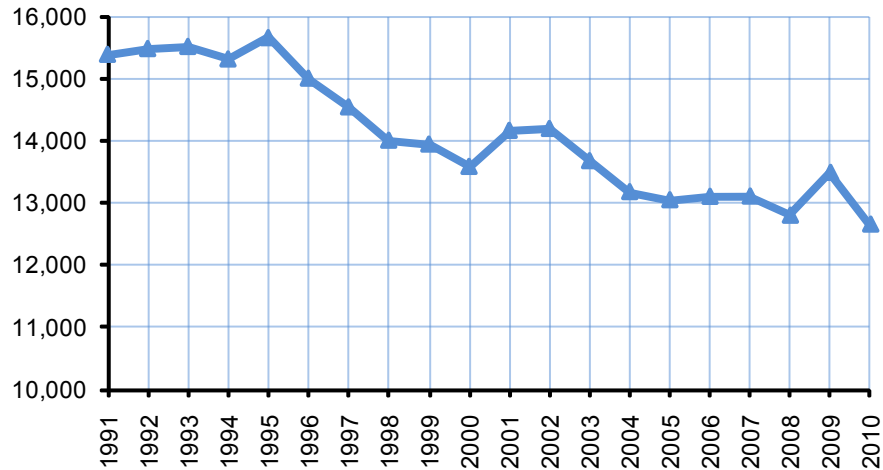




Summer Enrollment for All Sessions - 20 Year Trend



Summer Enrollment for All Sessions										
Student Level	1991	1992	1993	1994	1995	1996	1997	1998	1999	2000
Undergraduate	10,899	10,981	10,744	10,460	10,368	9,936	10,039	9,803	9,658	9,274
Professional	242	245	238	249	241	193	224	268	261	223
Graduate	4,247	4,256	4,534	4,605	5,048	4,875	4,278	3,931	4,021	4,083
TOTAL	15,388	15,482	15,516	15,314	15,657	15,004	14,541	14,002	13,940	13,580
Student Level	2001	2002	2003	2004	2005	2006	2007	2008	2009	2010
Undergraduate	9,478	9,399	9,095	8,725	8,606	8,461	8,378	8,211	8,562	8,492
Professional	265	214	206	255	244	213	192	215	237	282
Graduate	4,419	4,578	4,371	4,193	4,192	4,423	4,531	4,366	4,684	3,874
TOTAL	14,162	14,191	13,672	13,173	13,042	13,097	13,101	12,792	13,483	12,648

Notes: "All Sessions" includes a Three-week Pre-session, an Eight-week Session, a First Five-week Session and a Second Five-week Session. Also included is the number of students enrolled in classes delivered in Omaha (for all sessions) but administered from Lincoln. The foregoing are combined for a "Total Summer Enrollment" with no accounting for duplication in headcount. (Students enrolled in more than one session are counted more than once.)

Last Updated: July 27, 2010