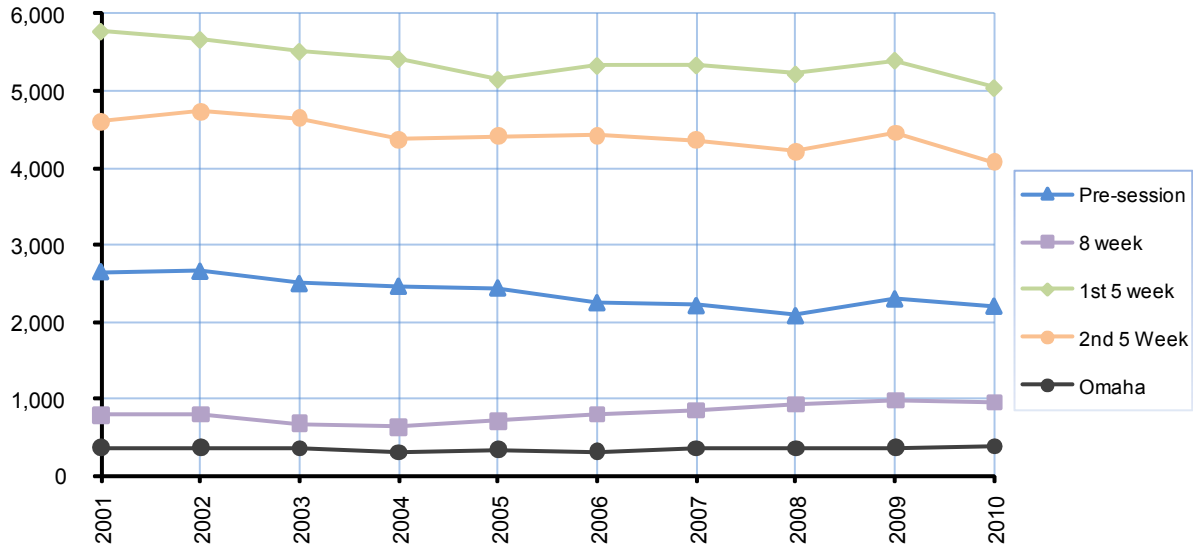




Summer Enrollment by Session - 10 Year Trend



Summer Enrollment by Session										
	2001	2002	2003	2004	2005	2006	2007	2008	2009	2010
Pre-Session	2,649	2,654	2,495	2,461	2,439	2,249	2,211	2,081	2,298	2,204
8 Week	784	789	670	625	703	794	844	925	975	947
1st 5 Week	5,770	5,665	5,513	5,416	5,152	5,330	5,336	5,221	5,398	5,045
2nd 5 Week	4,601	4,728	4,647	4,369	4,413	4,417	4,357	4,215	4,452	4,075
Students in Omaha	358	355	347	302	335	307	353	350	360	377
Total	14,162	14,191	13,672	13,173	13,042	13,097	13,101	12,792	13,483	12,648

Note: The number of students for each summer session term is combined for a "Total Summer Enrollment" with no accounting for duplication in headcount.

Last Updated: July 27, 2010