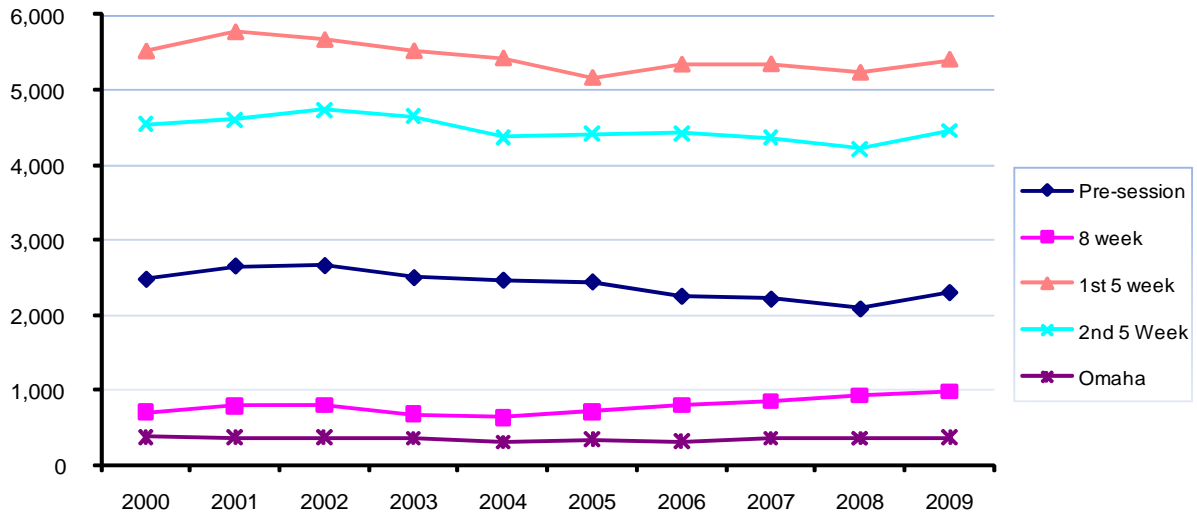




**Summer Enrollment by Session - 10 Year Trend**



Summer Enrollment by Session										
	2000	2001	2002	2003	2004	2005	2006	2007	2008	2009
Pre-Session	2,473	2,649	2,654	2,495	2,461	2,439	2,249	2,211	2,081	2,298
8 Week	694	784	789	670	625	703	794	844	925	975
1st 5 Week	5,511	5,770	5,665	5,513	5,416	5,152	5,330	5,336	5,221	5,398
2nd 5 Week	4,537	4,601	4,728	4,647	4,369	4,413	4,417	4,357	4,215	4,452
Students in Omaha	365	358	355	347	302	335	307	353	350	360
<b>Total</b>	<b>13,580</b>	<b>14,162</b>	<b>14,191</b>	<b>13,672</b>	<b>13,173</b>	<b>13,042</b>	<b>13,097</b>	<b>13,101</b>	<b>12,792</b>	<b>13,483</b>

Note: The number of students for each summer session term is combined for a "Total Summer Enrollment" with no accounting for duplication in headcount.

Last Updated: July 31, 2009