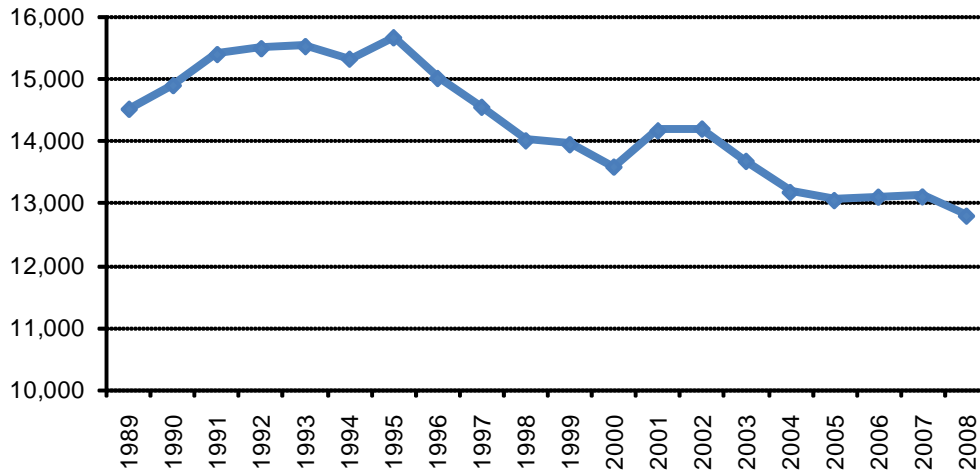




Summer Enrollment for All Sessions - 20 Year Trend



Summer Enrollment for All Sessions										
Student Level	1989	1990	1991	1992	1993	1994	1995	1996	1997	1998
Undergraduate	10,380	10,635	10,899	10,981	10,744	10,460	10,368	9,936	10,039	9,803
Professional	198	191	242	245	238	249	241	193	224	268
Graduate	3,931	4,063	4,247	4,256	4,534	4,605	5,048	4,875	4,278	3,931
<b>TOTAL</b>	<b>14,509</b>	<b>14,889</b>	<b>15,388</b>	<b>15,482</b>	<b>15,516</b>	<b>15,314</b>	<b>15,657</b>	<b>15,004</b>	<b>14,541</b>	<b>14,002</b>

Student Level	1999	2000	2001	2002	2003	2004	2005	2006	2007	2008
Undergraduate	9,658	9,274	9,478	9,399	9,095	8,725	8,606	8,461	8,378	8,211
Professional	261	223	265	214	206	255	244	213	192	215
Graduate	4,021	4,083	4,419	4,578	4,371	4,193	4,192	4,423	4,531	4,366
<b>TOTAL</b>	<b>13,940</b>	<b>13,580</b>	<b>14,162</b>	<b>14,191</b>	<b>13,672</b>	<b>13,173</b>	<b>13,042</b>	<b>13,097</b>	<b>13,101</b>	<b>12,792</b>

Notes: "All Sessions" includes a Three-week Pre-session, an Eight-week Session, a First Five-week Session and a Second Five-week Session. Also included is the number of students enrolled in classes delivered in Omaha (for all sessions) but administered from Lincoln. The foregoing are combined for a "Total Summer Enrollment" with no accounting for duplication in headcount. (Students enrolled in more than one session are counted more than once.)

Last Updated: August 11, 2008