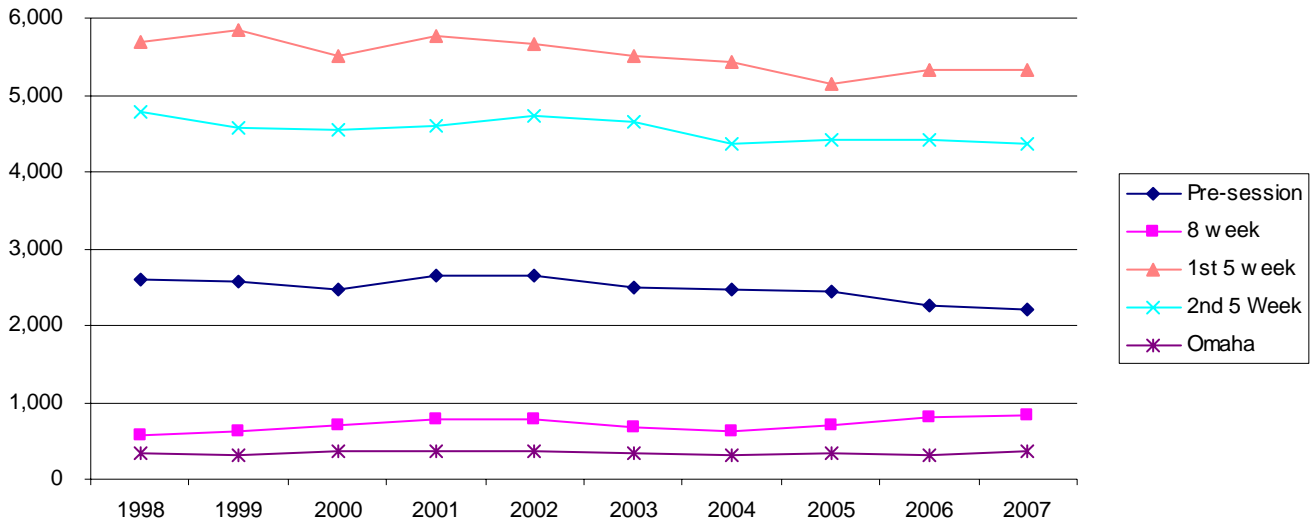




Summer Enrollment by Session - 10 Year Trend



Summer Enrollment by Session										
	1998	1999	2000	2001	2002	2003	2004	2005	2006	2007
Pre-Session	2,607	2,562	2,473	2,649	2,654	2,495	2,461	2,439	2,249	2,211
8 Week	583	619	694	784	789	670	625	703	794	844
1st 5 Week	5,686	5,857	5,511	5,770	5,665	5,513	5,416	5,152	5,330	5,336
2nd 5 Week	4,787	4,582	4,537	4,601	4,728	4,647	4,369	4,413	4,417	4,357
Students in Omaha	339	320	365	358	355	347	302	335	307	353
Total	14,002	13,940	13,580	14,162	14,191	13,672	13,173	13,042	13,097	13,101

Note: Nebraska College of Technical Agriculture data are not included on this page. The number of students for each summer session term is combined for a "Total Summer Enrollment" with no accounting for duplication in headcount.

Last Updated: August 9, 2007