

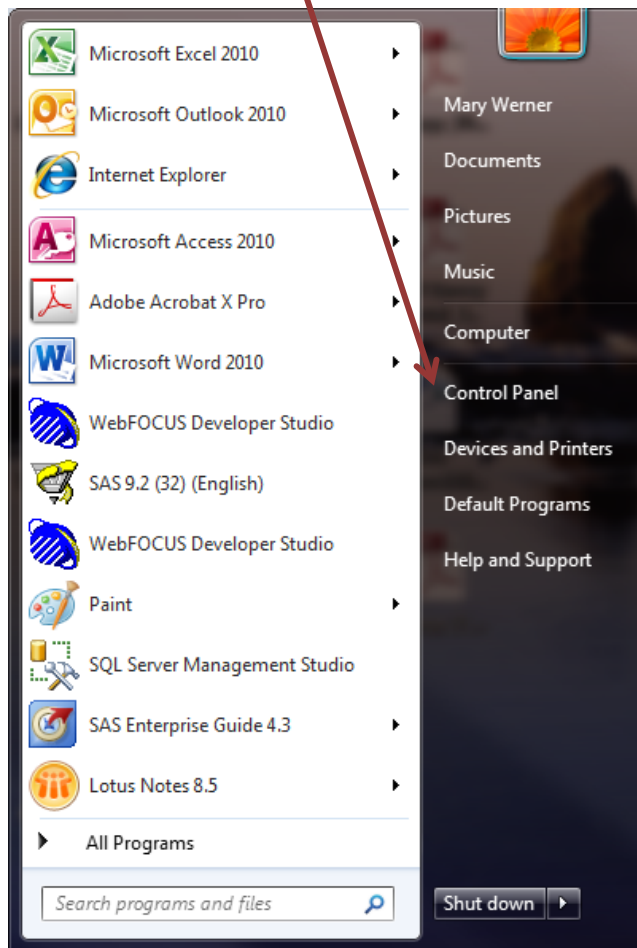
How to Setup nulook Data Source Windows 7



Institutional Effectiveness and Analytics
UNIVERSITY OF NEBRASKA-LINCOLN

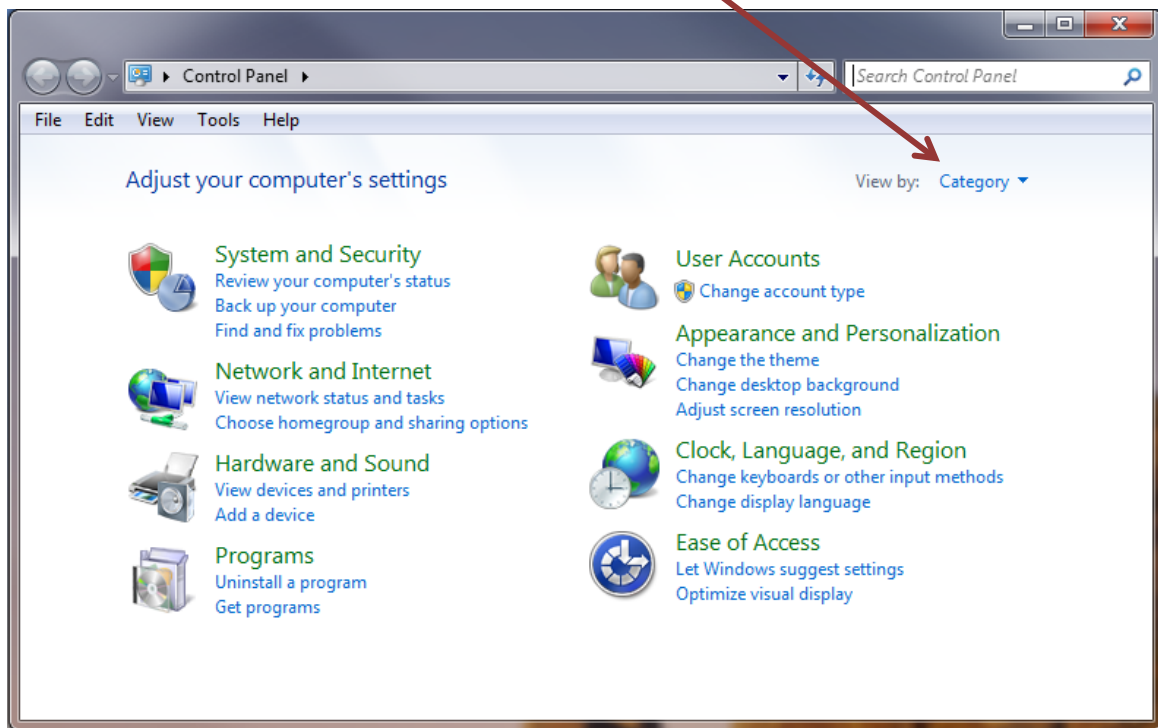
OCTOBER 2012
UPDATED APRIL 2016

Click the “**Start**” button (located in lower left of screen)
Then click “**Control Panel**”

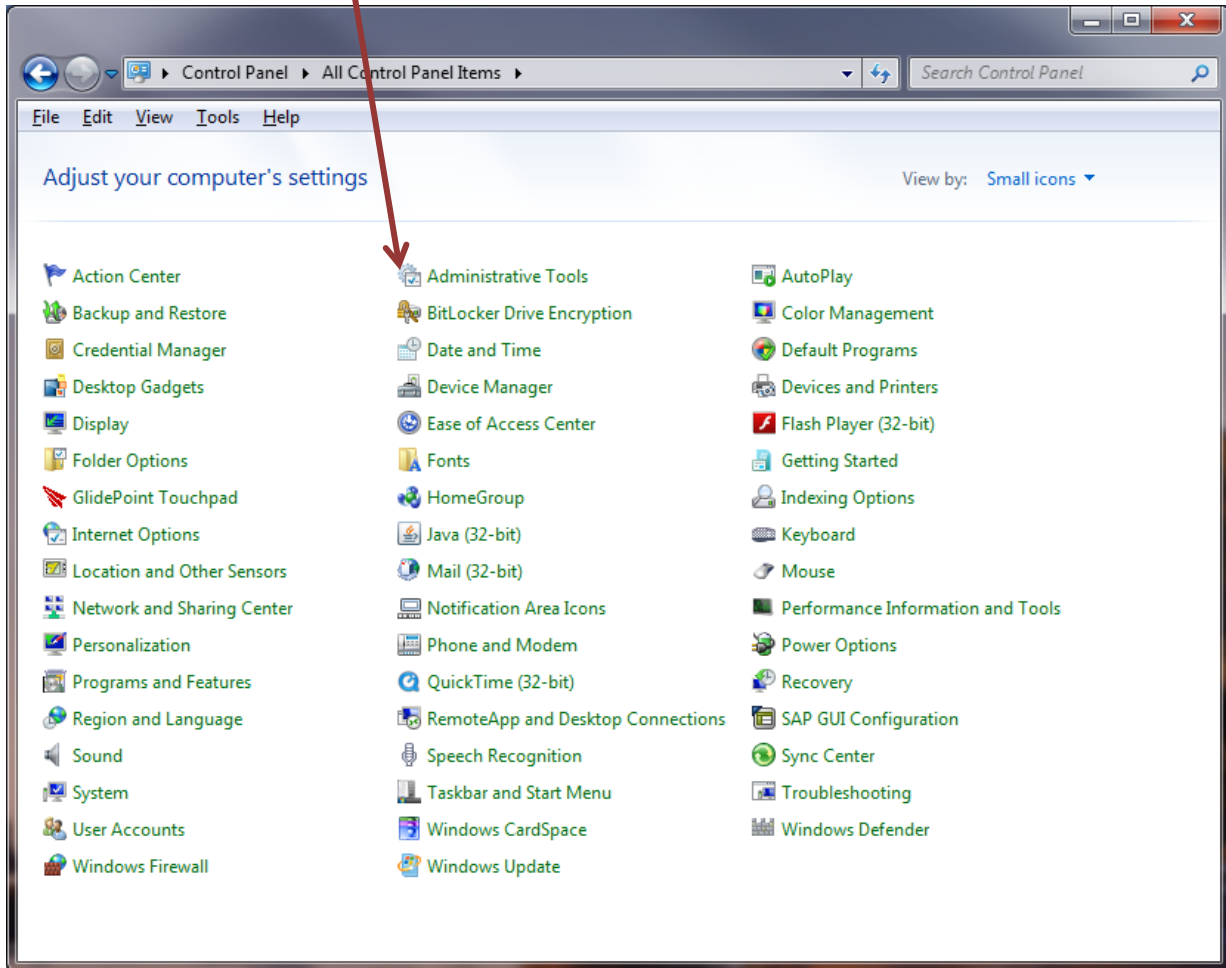


Control Panel is now displayed.

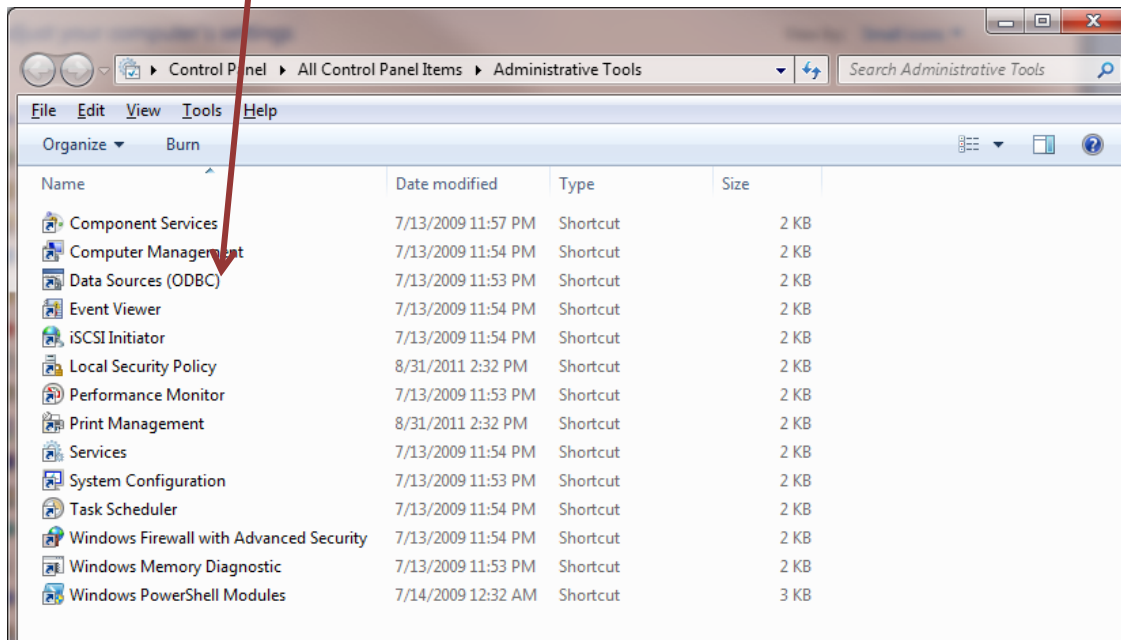
If necessary, change View from “Category” to “Small Icons”



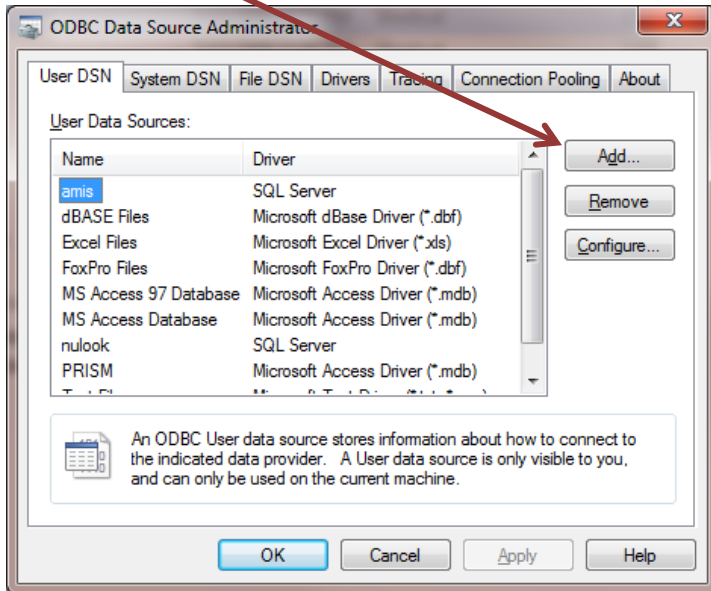
Select **“Administrative Tools”**



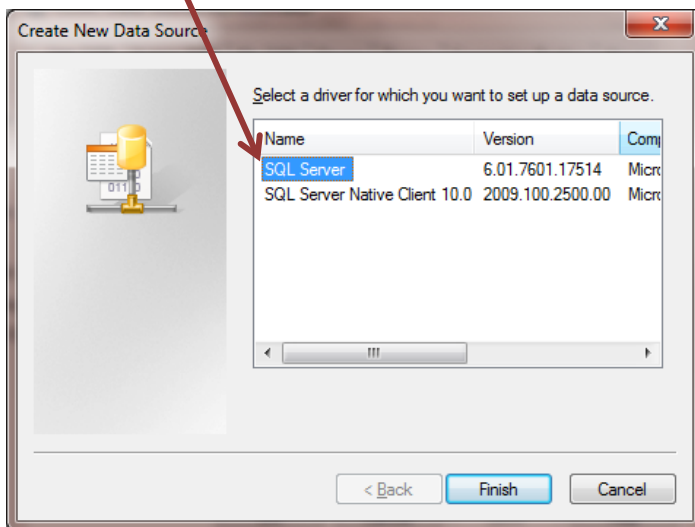
Select "Data Sources (ODBC)"



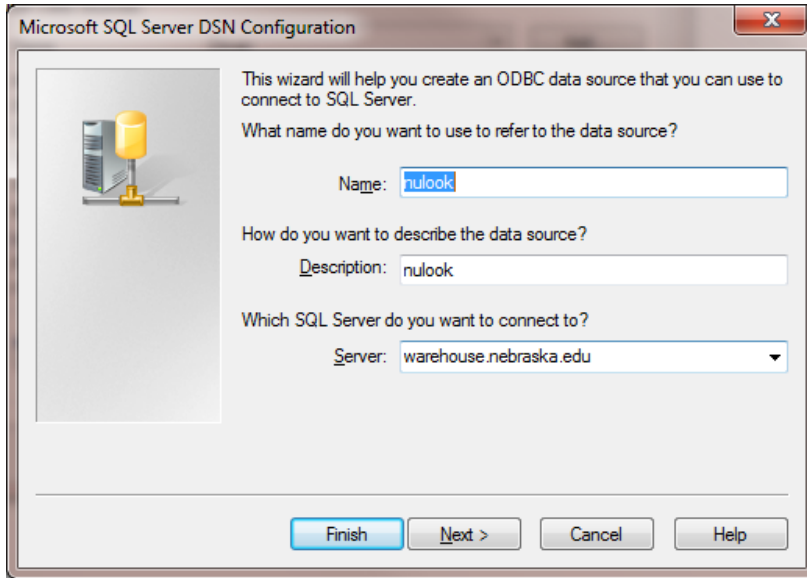
Select "Add"



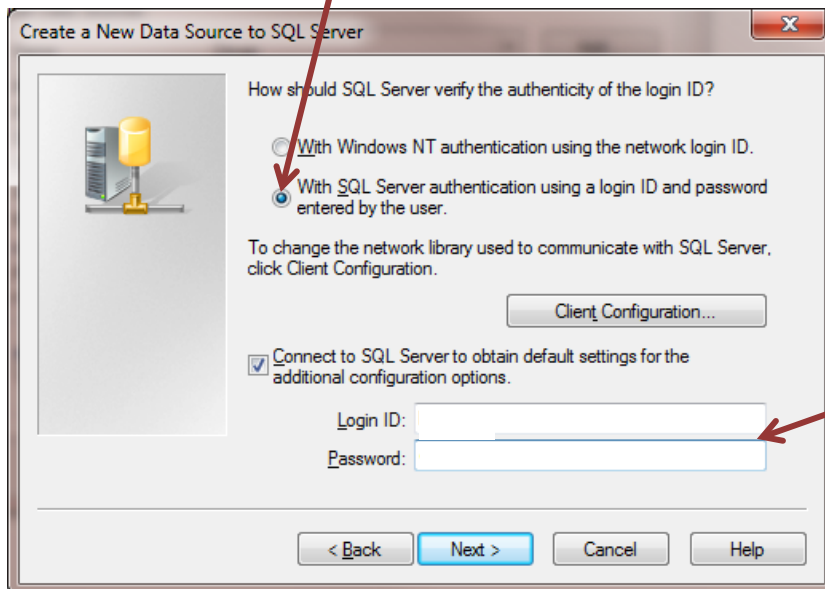
Select "SQL Server", and then "Finish"



Type in the “Name”, “Description” and “Server” name like this, and then click “Next”

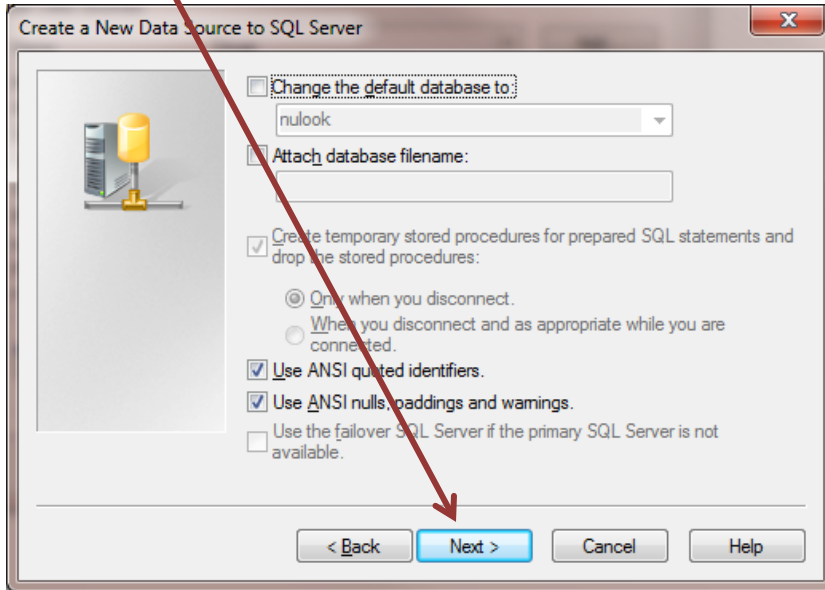


Select “With SQL Server authentication”

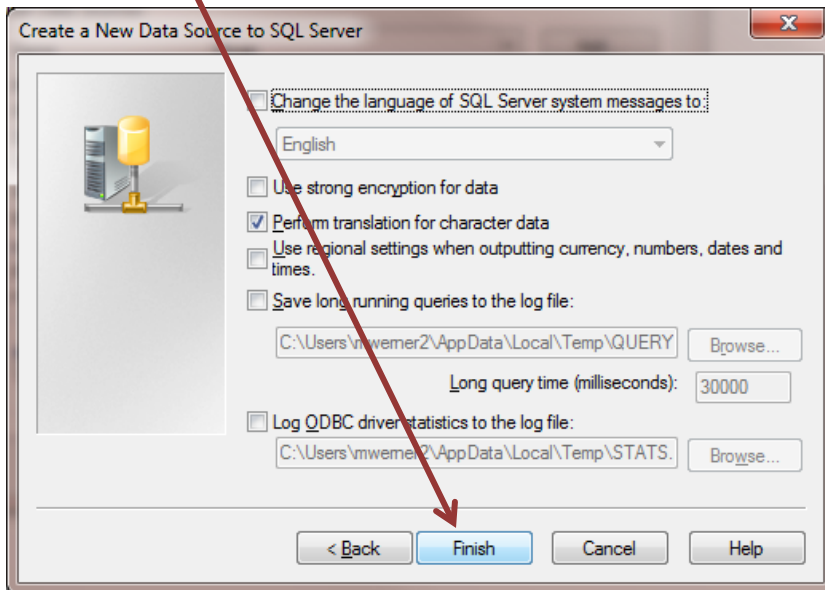


Login with your TrueYou credentials, and select “Next”

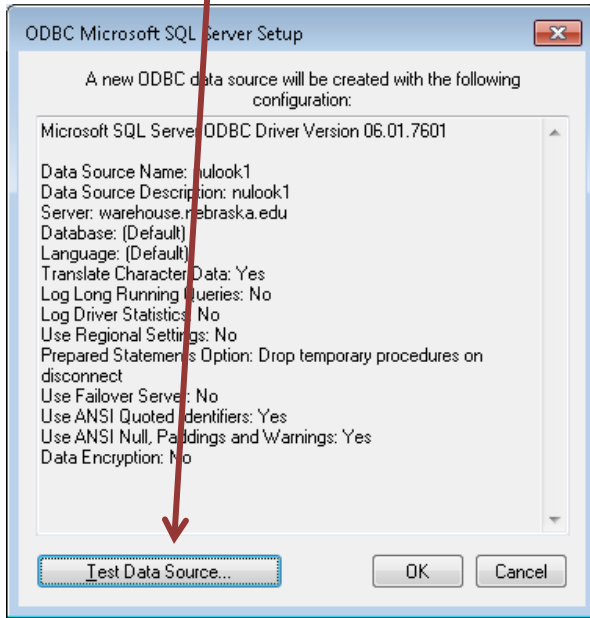
Click "Next"



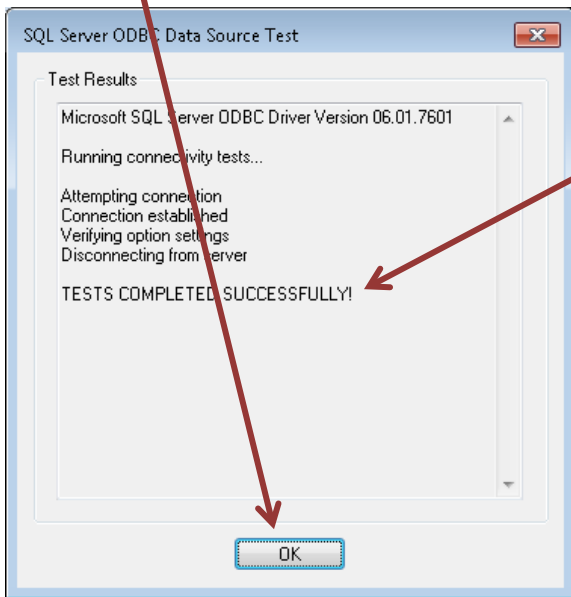
Click "Finish"



Press "Test Data Source"



Press "OK"



Should get this

Press "OK" - a data source named "nulook" has created. Close out open screens.

