

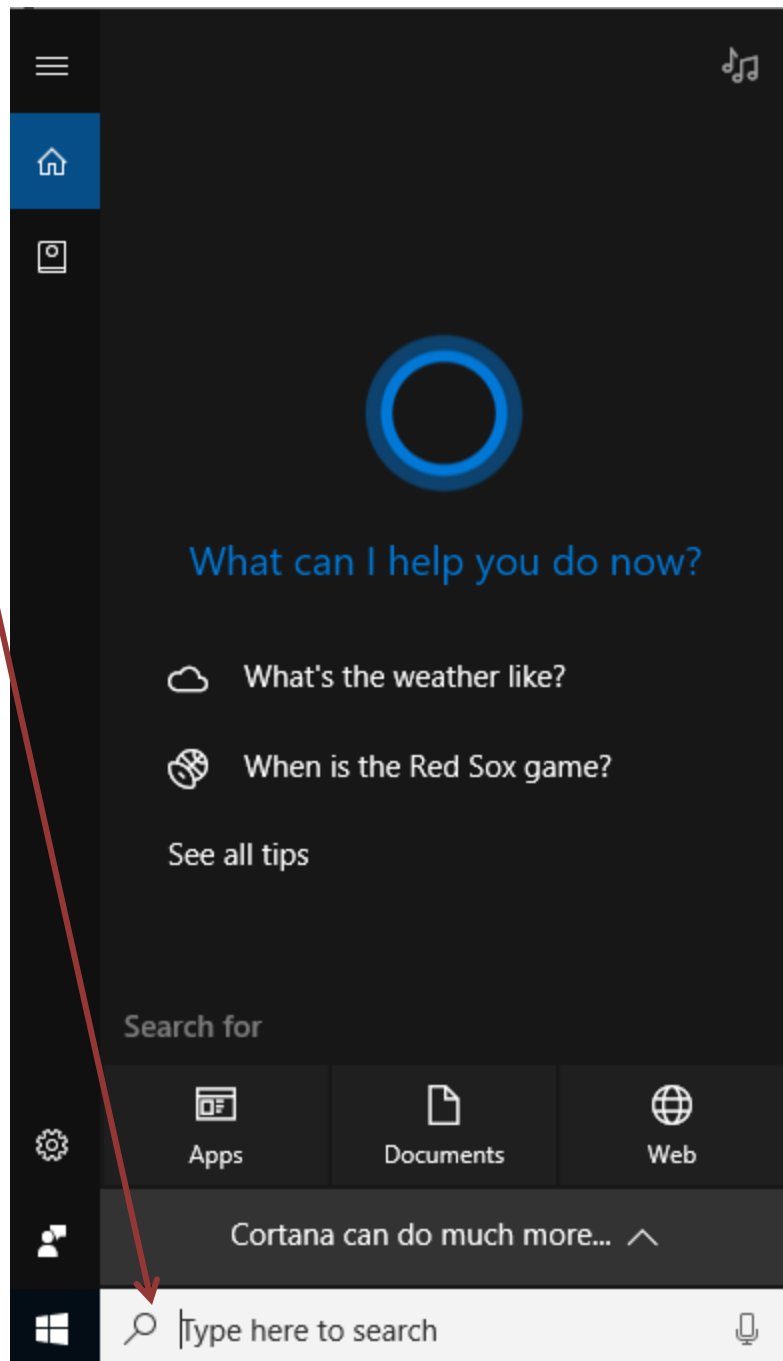
How to Setup nulook Data Source Windows 10



Institutional Effectiveness and Analytics
UNIVERSITY OF NEBRASKA-LINCOLN

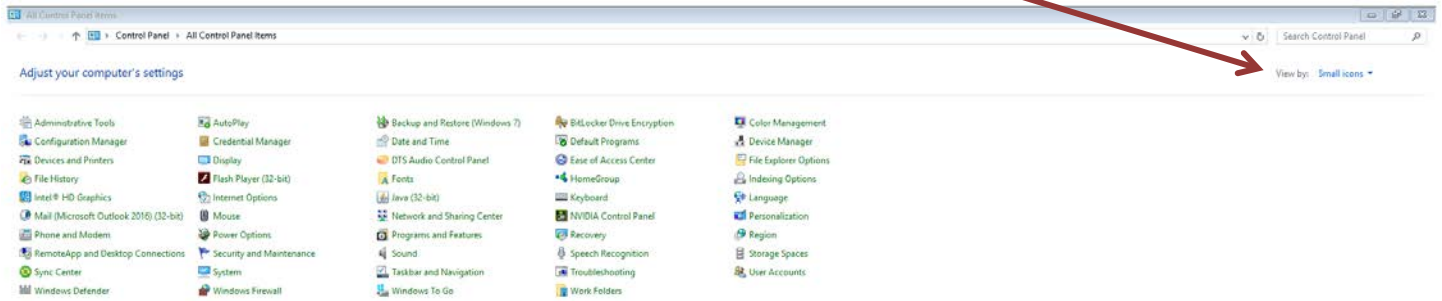
APRIL 2016

Type “**control panel**” in the “**Search**” box (located in lower left of screen), and press Enter to activate the Control Panel.

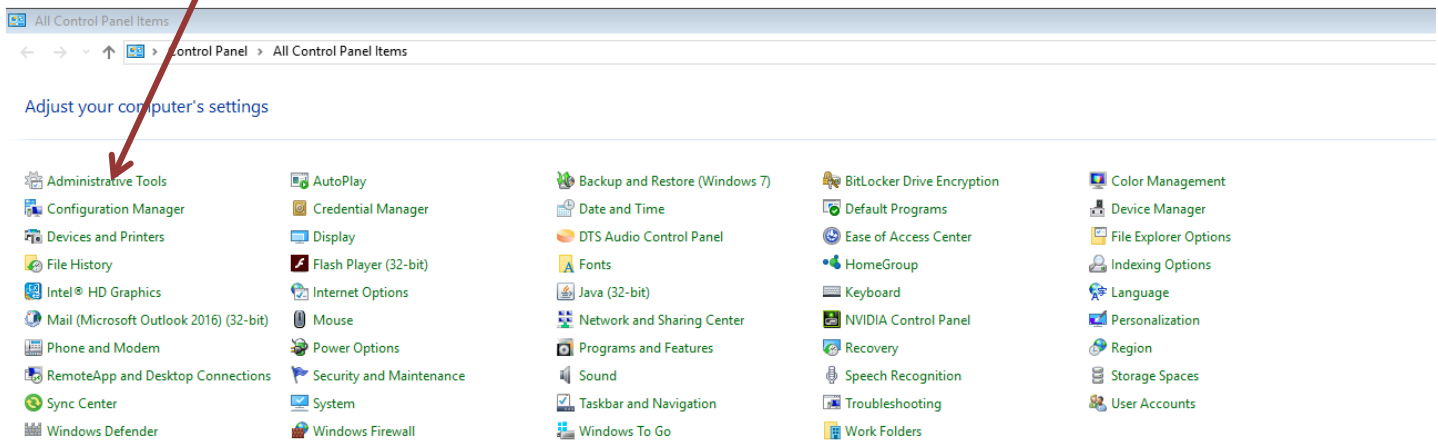


Control Panel is now displayed.

If necessary, change the “View by” to “Small Icons”



Select “Administrative Tools”

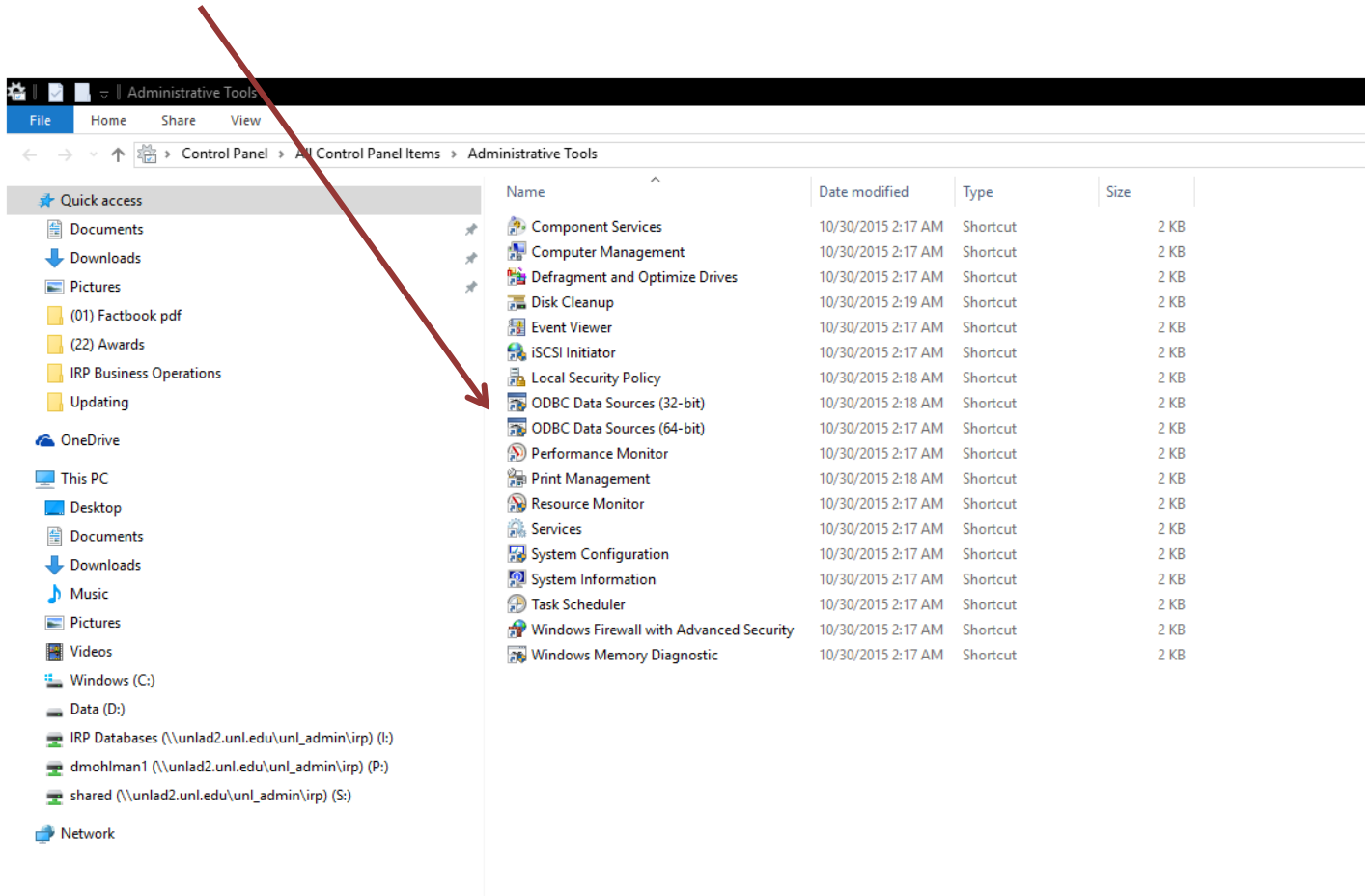


If needed, please see “How to Determine if Computer is 32-bit or 64-bit (Windows 10)”, located on the bottom of this page.


Select “**ODBC Data Sources (32-bit)**”

or

“**ODBC Data Sources (64-bit)**”

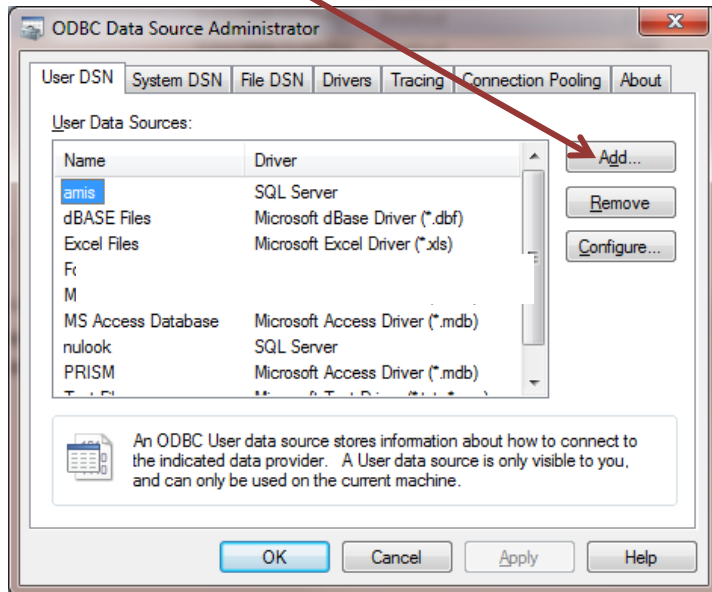


How to Determine if Computer is 32-bit or 64-bit (Windows 10)

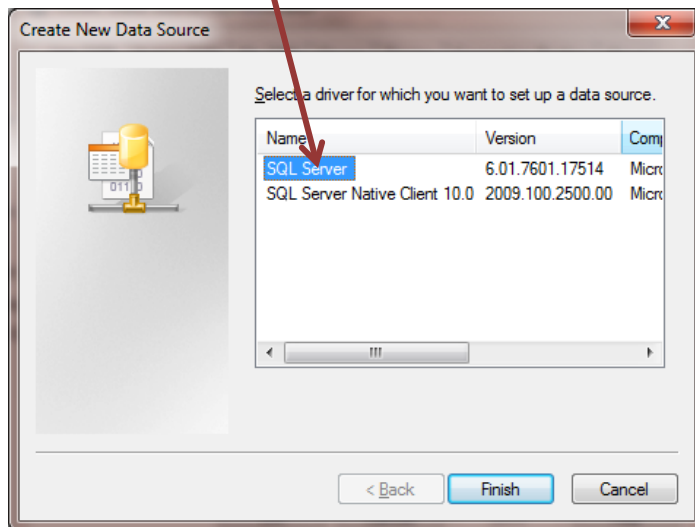
1. From the System icon  (lower left of screen), click on “**Settings**”
2. Click on “**System (Display, notifications, apps, power)**”
3. Click on “**About**”, which is on the menu on the left-hand side of screen
4. “**System type**” will tell you whether it is 32-bit or 64-bit operating system

From this point on, the process is essentially the same as Windows 7.

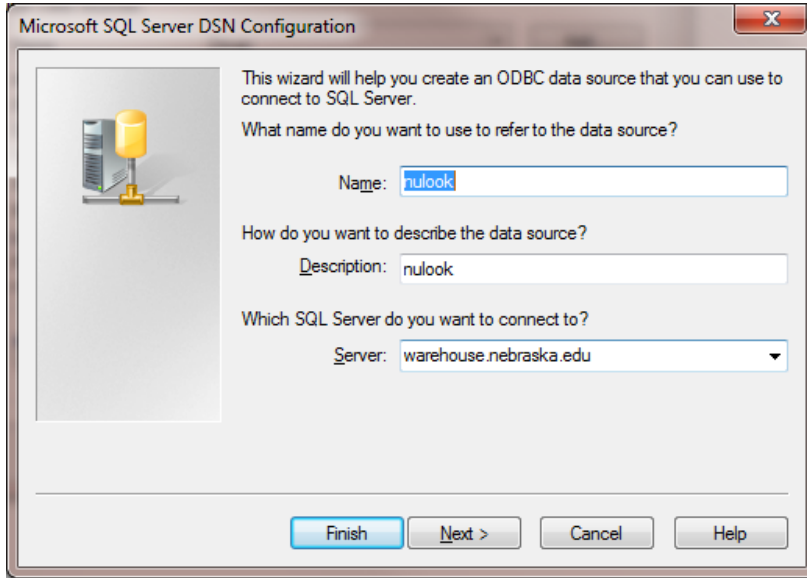
Select **“Add”**



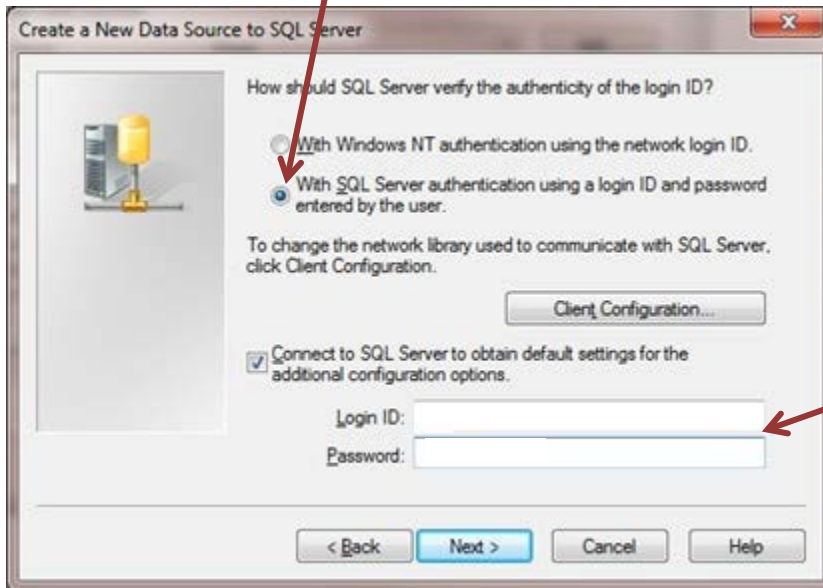
Select **“SQL Server”**, and then **“Finish”**



Type in the “Name”, “Description” and “Server” name like this, and then click “Next”

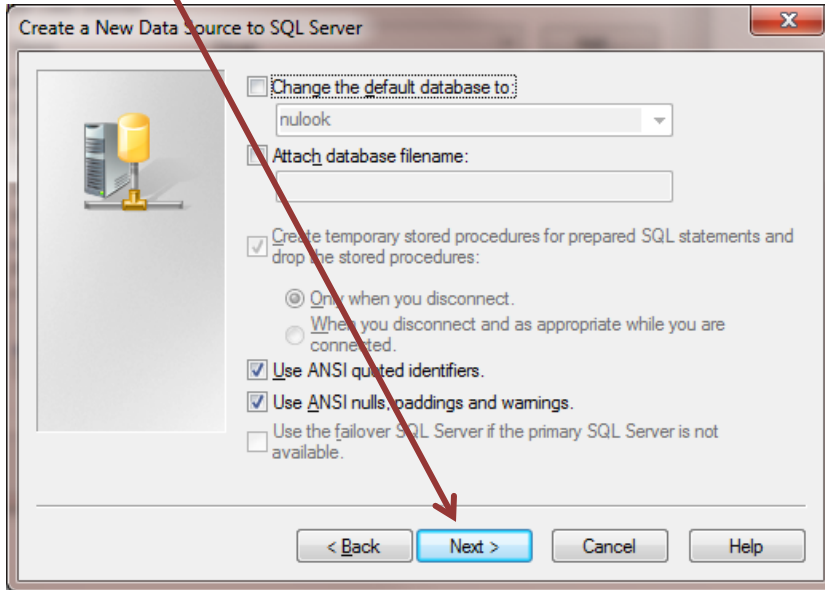


Select “With SQL Server authentication”

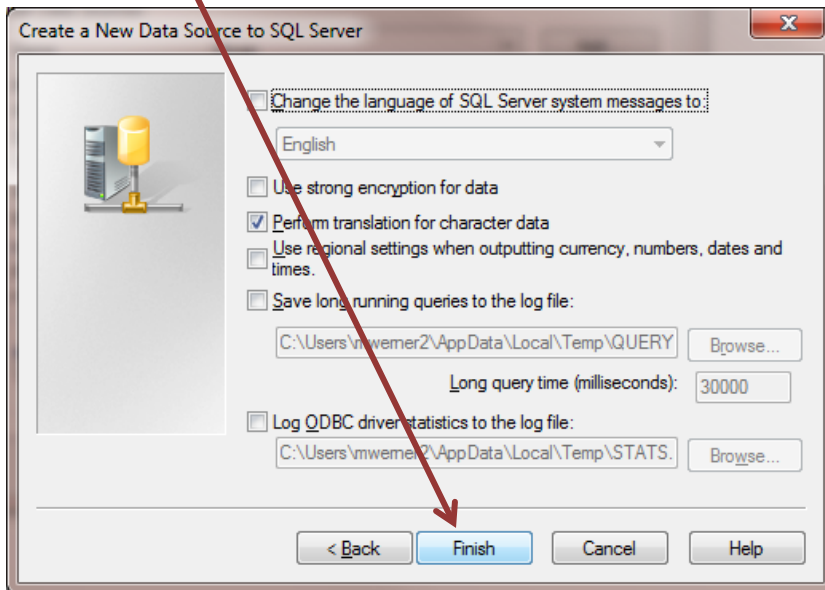


Login with your **TrueYou** credentials, and select “Next”.

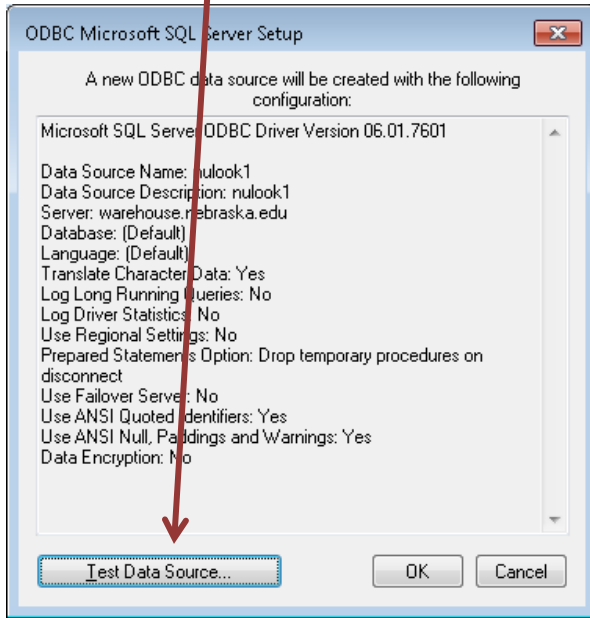
Click "Next"



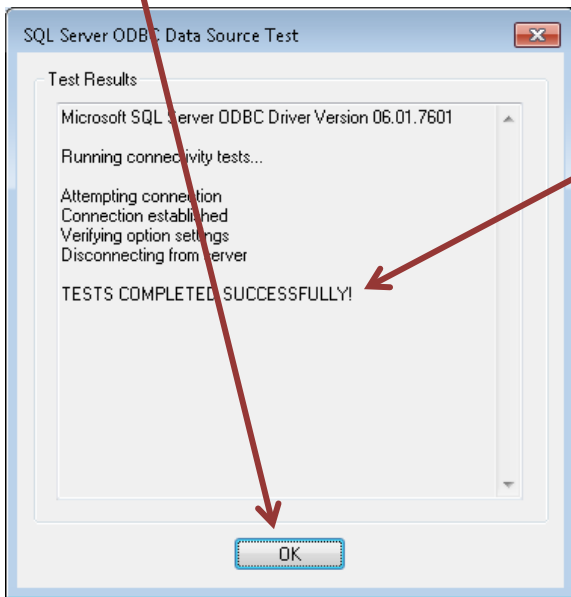
Click "Finish"



Press "Test Data Source"



Press "OK"



Should get this

Press "OK" - a data source named "nulook" has created. Close out open screens.

